

NEW FOR 2013!

MEET THE NEW GENERATION OF **BACK BARS REFRIGERATORS**

- New line of back bar refrigerators can be configured 4.7 billion different ways
- Customer choice of blue or white LED lighting
- Industry Exclusive wine drawers hold 30 upright bottles in top drawer plus storage for an additional 18 cradled bottles in the lower drawer (see below)
- Tapping available on most units



Single-Zone



Dual-Zone



Narrow-Door



Sliding Door &
Pass-Thru



Direct-Draw &
Concessionaire



INDEX

UNDERBAR EQUIPMENT

Top Shelf Story	4
Modular Bar Systems	7
Pass-thru Stations	9
Underbar Cocktail Stations	10

Ice Chests

Standard	11
Full Depth, 24"	13
Extra Capacity	15
Service Station	16
Drop-in	17
Accessories	17

Soda Gun and Filler Sections	18
Drainboards/Equipment Stands	19
Blender Stations	20
Bridge Units	21
Ice Cream Center/Insulated Storage Chest	22

Sinks

Hand Sinks	23
Multi-tank Sinks	24
Extra Capacity Sinks	25

Storage Bins & Cabinets

For Glassware	26
w/Full Drainboard Top	26
w/Sink and Waste Chute	26
Accessories	26
Glass & Chemical Storage Cabinets	27
Liquor Display (w/accessories)	28
Underbar Beer Drainer	28
Trash Receptacles	29

Corner Filler Sections	30
Speed Rails	31
Drink Rail Drainers	32

Additional Underbar Accessories

SS Apron	33
Access Cutouts	33
Blender Platforms	33
Bottle Opener/Cap Receiver & Waste Receptacle	33
Plumbing Accessories	34
Towel Ring, Soap & Towel Dispensers	34
Leg Kits/Foot Inserts	34
Connector Kits	34
Wet Waste Pans	34
Side Splash Guards	34

BACK BAR/REFRIGERATION

Self-Contained Refrigerated Cabinets

Single-Temp Zone (w/accessories)	35
Dual-Temp Zone (w/accessories)	37
Narrow-Door (w/accessories)	39
Sliding Door (w/accessories)	41
Sliding Door Pass-thru (w/accessories)	42
Pass-thru (w/accessories)	43

Remote Refrigerated Cabinets

Single-Temp Zone (w/accessories)	45
Narrow-Door (w/accessories)	47
Sliding Door (w/accessories)	49
Sliding Door Pass-thru (w/accessories)	50
Pass-thru (w/accessories)	51

Dry Storage Cabinets

Standard Door (w/accessories)	53
Narrow-door (w/accessories)	55
Pass-thru (w/accessories)	57
Glass, Liquor, Stemware Storage (w/accessories)	58

Direct Draw Beer Dispensers	59
Concessionaires	60
Beer/Wine Dispensing Kits for Back Bar Series	61

Glass Merchandise	62
Lighted Merchandise	63

Single Door Refrigeration

24" Refrigerator/Chiller/Wine Reserve	64
18" Shallow-Depth Refrigerator/Wine Reserve	65
24" ADA-Compliant Refrigerator/Freezer/ Beverage Center/Wine Reserve	66

Glass Chillers	67
Flat Top Bottle Coolers (Standard & Low-temp)	68
Slant Top Bottle Coolers	69
Bottle Cooler Accessories	70

MISCELLANEOUS

Glasswashers	71
Utility Coolers	72
Century/ArcticPour Beverage Dispensing Systems	72

Terms and Conditions/Warranty Information	73
---	----

Perlick Representative List	Inside Back Cover
-----------------------------------	-------------------

**FIVE-TIME
BEST IN CLASS
WINNER FOR 2012**



TOP SHELF STORY

For many years, Perlick Top Shelf underbar equipment has been the preferred choice of professional bartenders because they know properly designed bars and reliable equipment allows them to be creative, efficient and most importantly profitable. Top Shelf products are highly desired because they reflect our true passion for design, craftsmanship and innovation. When you select Perlick

"TS" Series of Underbar equipment you get everything you have learned to expect from Top Shelf. No matter if the shape of your bar is straight, curved, round or square; Perlick's custom Underbar is fabricated to match the contours of your bar and to surpass your expectations as an ideal product at an exceptional value.

"TS" Series

The Top Shelf heritage starts with our modular line of "TS" equipment that allows designers to showcase their creativity by designing extremely efficient work stations. "TS" series equipment has an overall depth of 18-9/16" and comes with a 6" high backsplash (4" high-optional). Sinks in the "TS" Series utilize backsplash mounted water faucets.



"TS" Series

"TSD" Series

Except for the "Deck" style Backsplash, the "TSD" series of Top Shelf Underbar is identical to the "TS" series. The "D" style backsplash has a flat deck at the back of the equipment which adds 5-7/16" to the overall depth. Sinks in the TSD Series utilize deck-mounted water faucets. The deck serves multiple purposes. "TS" equipment with an optional speed rail has an overall depth of 24" which matches the overall depth of "TSD" equipment. This creates a flush equipment front surface which eliminates those dreaded "knee knockers". The "TSD" series also moves the rear equipment legs away from the die wall allowing clearance for beverage lines and plumbing. Finally, the Deck style backsplash is perfect for creating a beverage chase to easily route beverage lines behind and above the Underbar equipment.



"TSD" Series

"TSF" Series

The Top Shelf "Full" depth series of Underbar uses the same 6" high, straight backsplash from the "TS" series. It creates a full 24" deep Underbar by using larger depth work surfaces. "TSF" style Underbar increases the volume of ice chests and the useable work surface of Drainboards by 34 percent. Just like "TSD", the "TSF" series has the rear equipment legs away from the die wall to allow ample room for routing mechanicals.



"TSF" Series

"TSS" Series

An abundance of Top Shelf modules can be configured to create a multitude of unique service stations. The "TSS" series uses a 3" flat deck to connect Back-To-Back Underbar modules. These 38" deep factory assembled sections create a highly efficient station for your bartender and servers to work as a team.



"TSS" Series

"PTS" Series

In addition to 38" deep Service Station modules, we offer pre-configured 32" deep "Pass Thru" Stations which makes choosing the ultimate cocktail station a snap. PTS stations are intended to be used in an open area of the bar and offer un-interrupted work surfaces for your bartenders and wait staff.



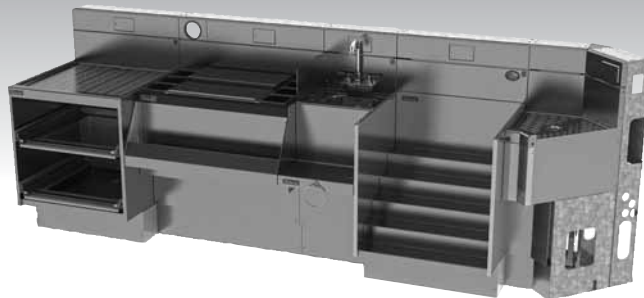
"PTS" Series

WHAT BAR IS RIGHT FOR YOU

Modular Bar

If your project is new construction or a complete remodel and there is no existing bar, then Modular Bar is your ultimate factory assembled solution to save both time and money! The Modular Bar structure is a heavy gauge frame that creates the die wall and the equipment supports for your underbar line-up. The complete bar interior, from top to bottom, is furnished in stainless steel to create a smooth finished appearance. All plumbing and electrical chases are built into the structure and removable millwork panels (supplied by others) provide easy, lift-off access to service utilities and beverage lines.

No matter if your bar is straight, round or curved, every Underbar module in our "Top Shelf" offering can be factory assembled in modular bar sections up to 8 ½ ft. long. With Modular Bar, you're insured that every piece of the puzzle fits.



Preassembled Underbar*

When a bar die already exists or is being built by others, Perlick can preassemble many of our Underbar modules, per the bar drawing, into straight sections up to 8 ½ ft long. These straight sections eliminate field connections and save time. Preassembled sections that share a common front apron will also share a common backsplash to give your bar a smooth, custom appearance. The factory will also determine the appropriate number of legs required for each preassembled section. This gives your bar the professional and uncluttered look you demand.

*Contact your Perlick Representative to configure preassembled sections.



Freestanding Underbar

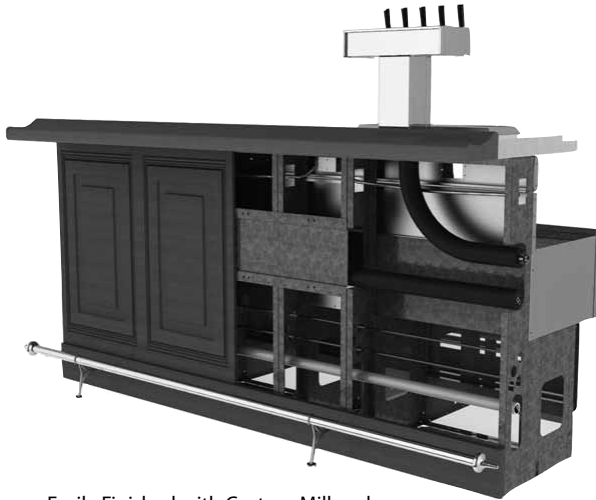
Freestanding underbar modules are built and shipped as individual pieces with its own backsplash and front apron. Each module ships with a complete set of legs. Freestanding units give you complete control to make last minute design changes or respond to unforeseen obstacles at the job site.



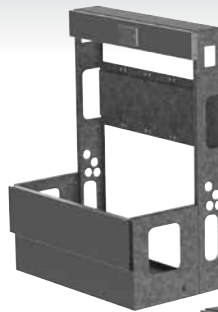
MODULAR BAR SYSTEM

- Pre-engineered sections up to 8-1/2 feet assures exact fit, eliminating on-site adjustments.
- All metal construction conceals beverage and utility lines.
- Interior finish panel is adjustable for sealing to the floor.
- Set-in-place beverage line chase eliminates damage to insulated beverage lines.

- Bar front panels are easily removed for quick access to all utilities and beverage lines.
- Bar top and front panels can be prefabricated to reduce on-site millwork costs.
- Factory-installed faucet's and drain sockets.
- Optional electrical outlets, fluorescent lights and LED lights.

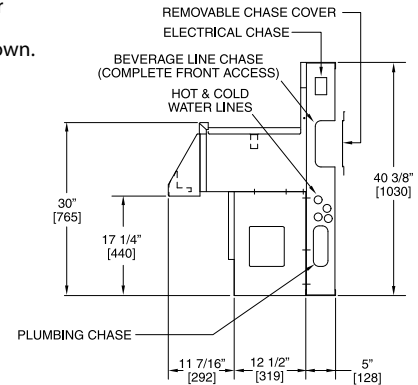


Easily Finished with Custom Millwork Provided by Others



Typical Modular Bar Void Section.

Typical Modular Bar Section (Underbar Equipment Not Shown. Order Separately).



PEDESTAL BASE END VIEW

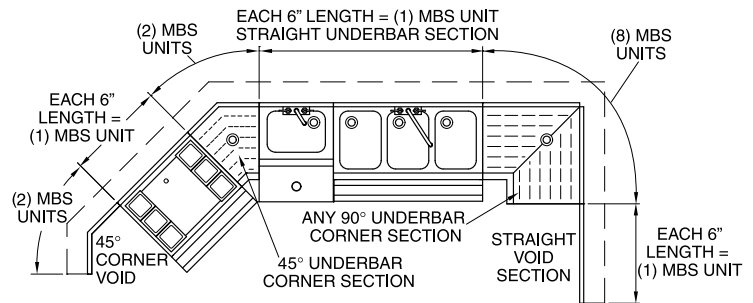
Modular Bar is priced using MBS units

Straight Sections

- Each 6" length equals (1) MBS unit.
- Example: 48" of Modular Bar structure equals (8) MBS units.

Corner Sections

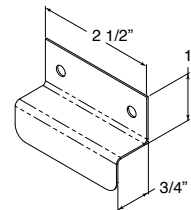
- 90° corner sections are priced using (8) MBS units.
- 60° and 75° corner sections are priced using (4) MBS units.
- 30° and 45° corner sections are priced using (2) MBS units.
- 5°, 10°, 15°, 20° and 25° corner sections are priced using (1) MBS unit.



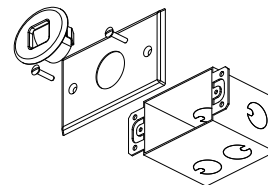
Part No	Description	Ship Wt. (lbs)
MBS	6" bar structure section	10

Accessories

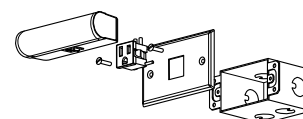
Part No	Description
MBS-LED-CW	LED accent light kit, cool white, 24Vdc. 2.5w
MBS-LED-PS25	Power supply for up to 7 LED lights, converts 120Vac to 24Vdc, 25w Max
MBS-LED-PS40	Power supply for up to 12 LED lights, converts 120Vac to 24Vdc, 40w Max
MBS-ERCL	Mini fluorescent light kit, 120Vac, 3.5w, 2 prong plug
MBS-EC	Junction box w/S.S. duplex cover
MBS-EC-G	Gasket, Duplex outlet, weatherproof, bag of 2
MBS-MT	Full size foot print template (printed on durable film)
57420	Millwork panel clip, 3/4" offset, 24 pieces



57420 Millwork panel clip



MBS-LED-CW Led light, junction box & cover.



MBS-ERCL Mini light, junction box, receptacle & cover.

NOTE: Modular bar systems are custom made and cannot be returned for credit.

PASS-THRU STATIONS

GENERAL EQUIPMENT DESCRIPTIONS:

Filler Section: 4-1/4" x 32". Includes 2-3/4" x 6" x 4" high stainless steel beverage chase.

Ice Chest: 24" x 32". Ice capacity = 95 pounds. Includes 10 circuit cold plate and (4) bottle wells with four-piece cover.

Dual Sink: 12" x 32". Each sink 10-5/8" x 9-5/8" x 6" deep. Includes deck mount faucet w/goose neck spout and (2) wet waste boxes.

Drainboard: 12" x 32". Embossed stainless steel drainboard top.

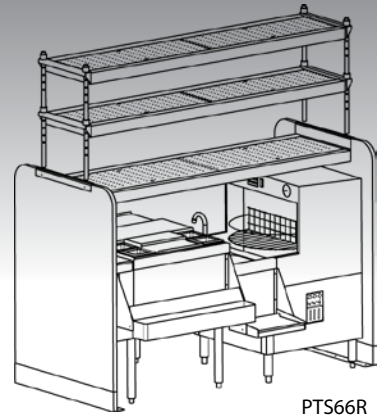
Glasswasher: 24" x 24". Cycle time = 120 seconds. Chemical controls located on bartender side. (Not included, order separately)

Overshelf - Fixed: 18" x length of station. Includes removable glass racks.

Overshelf - Adjustable: 15" x length of station. Includes (2) shelves with removable racks and stainless steel mounting posts.

End Panel: 7/8" x 32" x 45" high. Stainless steel with floor mounting brackets.

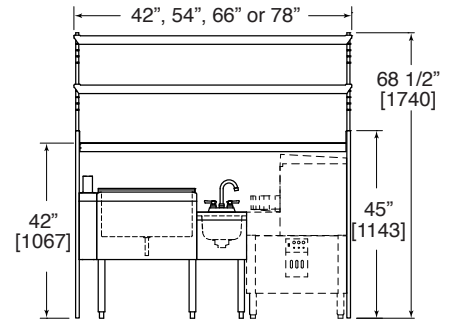
Accessory Group: 28" Bottle rail & 28" Hang-on bottle rail, spanning ice chest and filler section. 12" Bottle rail & 12" Hang-on bottle rail, only on units that include a drainboard. 12" Blender shelf mounted to dual sink.



PTS66R

NOTE: Pass-thru stations are custom made and cannot be returned for credit.

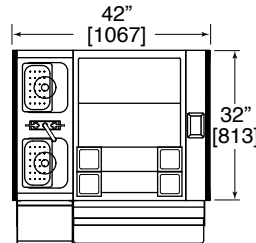
Pass-Thru Series	Filler Section	Ice Chest	Dual Sink	Drain board	3 Tier Overshelf	End Panels	Accessory Group
PTS42	X	X	X		X	X	X
PTS54	X	X	X	X	X	X	X
PTS66	X	X	X		X	X	X
PTS78	X	X	X	X	X	X	X



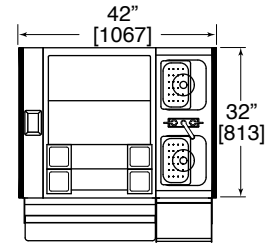
42" Pass-Thru Stations†

PTS Series

Part No.	Length	Ship Wt. (lbs)
PTS42L‡	42"	475
PTS42R‡	42"	475



PTS42L

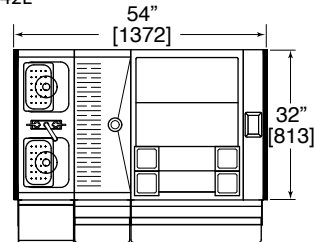


PTS42R

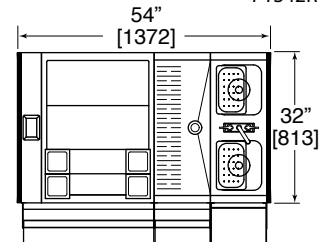
54" Pass-Thru Stations†

PTS Series

Part No.	Length	Ship Wt. (lbs)
PTS54L‡	54"	575
PTS54R‡	54"	575



PTS54L

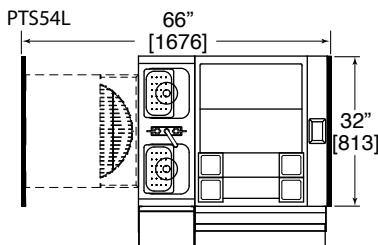


PTS54R

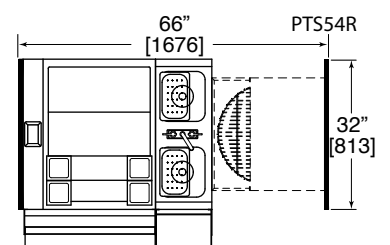
66" Pass-Thru Stations†*

PTS Series

Part No.	Length	Ship Wt. (lbs)
PTS66L‡	66"	790
PTS66R‡	66"	790



PTS66L

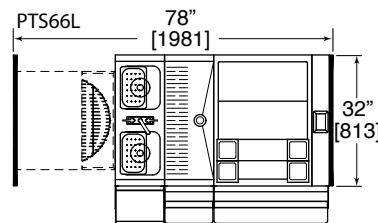


PTS66R

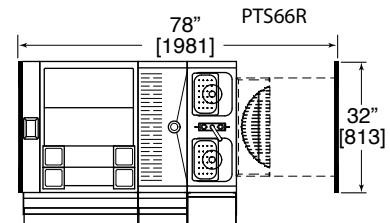
78" Pass-Thru Stations†*

PTS Series

Part No.	Length	Ship Wt. (lbs)
PTS78L‡	78"	890
PTS78R‡	78"	890



PTS78L



PTS78R

† For Pass-Thru Stations with a "Lead Free Faucet", add "-LF" suffix to part number (with additional price)

*Glasswasher not included, order separately.

‡ Add a "-ETP" suffix to Model Number for Pass Thru Stations with Shelf Posts that are 5.7" taller than standard

NOTE: Pass-Thru Stations are custom made and cannot be returned for credit.



8300 West Good Hope Road • Milwaukee, WI 53223 • Phone 414-353-7060 • Fax 414-353-7069
Toll Free 800-558-5592 • E-Mail: Perlick@Perlick.com • www.Perlick.com

PASS-THRU STATIONS

Please select from the following equipment groups to custom configure your Pass-Thru Station.

GENERAL EQUIPMENT DESCRIPTIONS:

Filler Section: 4-1/4" x 32". Includes 2-3/4" x 6" x 4" high stainless steel beverage chase.

Ice Chest: 24" x 32". Ice capacity = 95 pounds. Includes 10 circuit cold plate.

Dual Sink: 12" x 32". Each sink 10-5/8" x 9-5/8" x 6" deep. Includes deck mount faucet w/goose neck spout.

Drainboard: 12" x 32". Embossed stainless steel drainboard top.

Glasswasher: 24" x 24". Cycle time = 120 seconds. Chemical controls located on bartender side. (Not included, order separately)

Equipment Group - Required†

42"		54"		66"		78"	
Part No.	Ship Wt. (lbs.)	Part No.	Ship Wt. (lbs.)	Part No.	Ship Wt. (lbs.)	Part No.	Ship Wt. (lbs.)
PTS42L-1	260	PTS54L-1	310	PTS66L-1*	260	PTS78L-1*	310
PTS42R-1	260	PTS54R-1	310	PTS66R-1*	260	PTS78R-1*	310

Refer to illustrations on previous page for equipment configurations.

† For Equipment Groups with a "Lead Free Faucet", add "LF" suffix to part number

* Glasswasher not included, order separately.

Equipment Group Option - Required for Ice Chest

Part No.	Description
ICC-PT24	Ice Chest Three-piece Cover Assembly
BW-PT4-24	Ice Chest Cover Assembly with 4 Bottle Wells

Accessory Group - Optional

42"		54"		66"		78"	
Part No.	Ship Wt. (lbs.)	Part No.	Ship Wt. (lbs.)	Part No.	Ship Wt. (lbs.)	Part No.	Ship Wt. (lbs.)
PTS42-2	20	PTS54-2	25	PTS66-2	20	PTS78-2	25

42" & 66" Group: 12" Blender Shelf, 28" Bottle Rail, 28" Hang-on Bottle Rail, and (2) Wet Waste Boxes.

54" & 78" Group: 12" Blender Shelf, 12" & 28" Bottle Rails, 12" & 28" Hang-on Bottle Rails, and (2) Wet Waste Boxes.

Fixed Overshelf - Optional

42"		54"		66"		78"	
Part No.	Ship Wt. (lbs.)	Part No.	Ship Wt. (lbs.)	Part No.	Ship Wt. (lbs.)	Part No.	Ship Wt. (lbs.)
PTS42-3	50	PTS54-3	65	PTS66-3	80	PTS78-3	95

REQUIRES END PANEL OPTION. Description: 18" wide shelf with removable glass racks and end panel mounting brackets.

End Panel Option - (Set of 2) Required to Support Fixed Overshelf

Part No.	Description	Ship Wt. (lbs.)
PTS-EPL	7/8" x 32" x 45" high. Customer choice of laminate over wooden core	45
PTS-EPS	7/8" x 32" x 45" high. Stainless steel	45

Note - Both End Panel options include stainless steel floor coving/mounting brackets.

PTS-FB Fixed overshelf mounting brackets (set of 2) — N/C - (Order in-lieu-of adjustable overshelves)

Adjustable Overshelf with Mounting Posts - Optional

42"		54"		66"		78"	
Part No.	Ship Wt. (lbs.)	Part No.	Ship Wt. (lbs.)	Part No.	Ship Wt. (lbs.)	Part No.	Ship Wt. (lbs.)
PTS42-4‡	55	PTS54-4‡	70	PTS66-4‡	85	PTS78-4‡	100

REQUIRES FIXED OVERSHELF OPTION. Description: 15" wide shelf with removable glass racks and mounting posts.

‡ Add "-ETP" suffix to Model Number for Pass Thru Stations with Shelf Posts that are 5.7" taller than standard

Additional Adjustable Overshelf - Optional

42"		54"		66"		78"	
Part No.	Ship Wt. (lbs.)	Part No.	Ship Wt. (lbs.)	Part No.	Ship Wt. (lbs.)	Part No.	Ship Wt. (lbs.)
PTS42-5	45	PTS54-5	60	PTS66-5	75	PTS78-5	90

NOTE: Pass-Thru Stations (less glasswashers) are custom made and cannot be returned for credit.

UNDERBAR COCKTAIL STATIONS

(Not Applicable on Modular Bar)



UCS72A

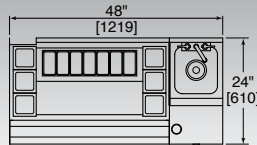
All units include the following accessories.

- Ice Chest with 10 circuit cold plate
- Bottle Rail - full length of Ice Chest
- Bottle Wells & Covers for Ice Chest
- Condiment Cup Rack
- Backsplash Cut-out for soda lines (located on left end of Ice Chest)
- End splash (located between Ice Chest & Blender)
- Towel Ring (located on Blender)

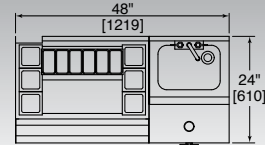
48" Cocktail Stations†

TS Series

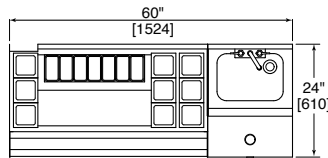
Part No.	Length	Ship Wt. (lbs.)
UCS48A	48"	250
UCS48B	48"	250



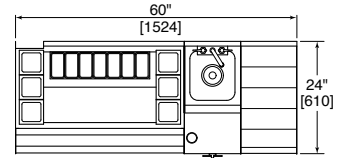
UCS48A
• 36" Ice Chest
• 12" Blender w/Sink



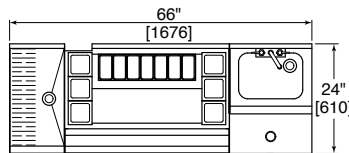
UCS48B
• 30" Ice Chest
• 18" Blender w/Sink



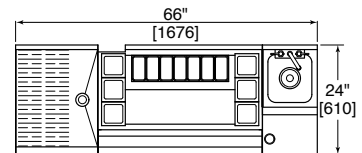
UCS60A
• 42" Ice Chest
• 18" Blender w/Sink



UCS60B
• 36" Ice Chest
• 12" Blender w/Sink
• 12" Liquor Display



UCS66A
• 12" Drop-Down Drainboard
• 36" Ice Chest
• 18" Blender w/Sink

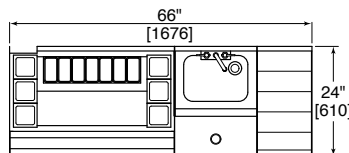


UCS66B
• 18" Drop-Down Drainboard
• 36" Ice Chest
• 12" Blender w/Sink

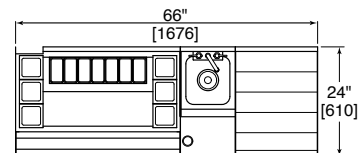
60" Cocktail Stations†

TS Series

Part No.	Length	Ship Wt. (lbs.)
UCS60A	60"	270
UCS60B	60"	280



UCS66C
• 36" Ice Chest
• 18" Blender w/Sink
• 12" Liquor Display

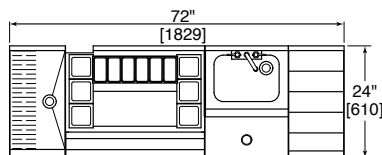


UCS66D
• 36" Ice Chest
• 12" Blender w/Sink
• 18" Liquor Display

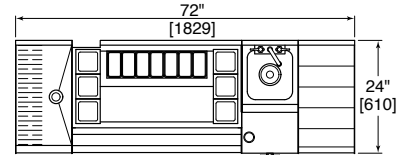
66" Cocktail Stations†

TS Series

Part No.	Length	Ship Wt. (lbs.)
UCS66A	66"	290
UCS66B	66"	285
UCS66C	66"	290
UCS66D	66"	290



UCS72A
• 12" Drop-Down Drainboard
• 30" Ice Chest
• 18" Blender w/Sink
• 12" Liquor Display

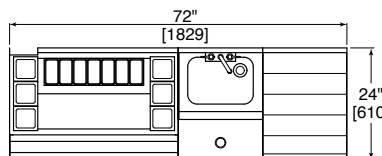


UCS72B
• 12" Drop-Down Drainboard
• 36" Ice Chest
• 12" Blender w/Sink
• 12" Liquor Display

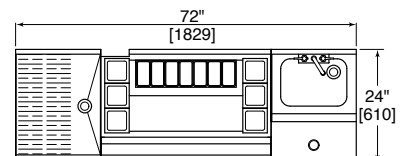
72" Cocktail Stations†

TS Series

Part No.	Length	Ship Wt. (lbs.)
UCS72A	72"	310
UCS72B	72"	310
UCS72C	72"	300
UCS72D	72"	300



UCS72C
• 36" Ice Chest
• 18" Blender w/Sink
• 18" Liquor Display



UCS72D
• 18" Drop-Down Drainboard
• 36" Ice Chest
• 18" Blender w/Sink

† For Cocktail Stations with a "Lead Free Faucet", add "-LF" suffix to part number

NOTE: Cocktail stations are custom made and cannot be returned for credit.



8300 West Good Hope Road • Milwaukee, WI 53223 • Phone 414-353-7060 • Fax 414-353-7069
Toll Free 800-558-5592 • E-Mail: Perlick@Perlick.com • www.Perlick.com

ICE CHEST

Standard Ice Chests

All Cold Plate Ice Chests now 10 Circuit.

TS Series Part No.	TSD Series Part No.	TSS Series Part No.	Ice Cap. (lbs.)	Ship Wt. (lbs.)	No. of Cold Plate Circuits
18" Long					
TS18IC	TSD18IC	TSS18IC	35	50	N/A

Accessory Covers and Bottle Wells for 18" Ice Chests

Part No.	Description	List Price
ICC18	Front & Back Covers	
BW3-18	3 Plastic Bottle Wells / Front & Back Covers	
BW9-18	9 Plastic Bottle Wells - No Covers	
BW3S-18	S.S. Bottle Holder / Front & Back Covers	

24" Long					
TS24IC	TSD24IC	TSS24IC	50	60	0
TS24IC10	TSD24IC10	TSS24IC10	50	130	10

Accessory Covers and Bottle Wells for 24" Ice Chests

Part No.	Description
ICC24	Front & Back Covers
BW3-24	3 Plastic Bottle Wells / Front & Back Covers
BW6-24	3 Plastic Bottle Wells / Front & Back Covers / 3 Plastic Bottle Wells
BW6A-24	6 Plastic Bottle Wells / Front & Back Covers
BW3S-24	S.S. Bottle Holder / Front & Back Covers
BW6S-24	S.S. Bottle Holder / Front & Back Covers / S.S. Bottle Holder

30" Long					
TS30IC	TSD30IC	TSS30IC	70	70	N/A
TS30IC10	TSD30IC10	TSS30IC10	70	140	10

Accessory Covers and Bottle Wells for 30" Ice Chests

Part No.	Description
ICC30	Front & Back Covers
BW3-30	3 Plastic Bottle Wells / Front & Back Covers
BW6-30	3 Plastic Bottle Wells / Front & Back Covers / 3 Plastic Bottle Wells
BW6A-30	6 Plastic Bottle Wells / Front & Back Covers
BW9-30	3 Plastic Bottle Wells / Front & Back Covers / 6 Plastic Bottle Wells
BW3S-30	S.S. Bottle Holder / Front & Back Covers
BW6S-30	S.S. Bottle Holder / Front & Back Covers / S.S. Bottle Holder

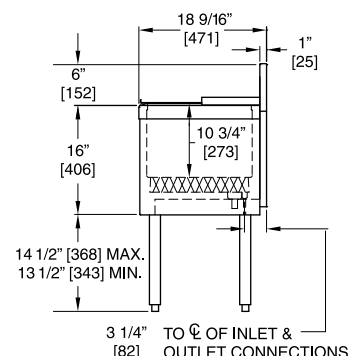
36" Long					
TS36IC	TSD36IC	TSS36IC	85	80	N/A
TS36IC10	TSD36IC10	TSS36IC10	85	150	10

Accessory Covers and Bottle Wells for 36" Ice Chests

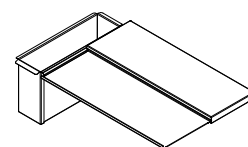
Part No.	Description
ICC36	Front & Back Covers
BW3-36	3 Plastic Bottle Wells / Front & Back Covers
BW6-36	3 Plastic Bottle Wells / Front & Back Covers / 3 Plastic Bottle Wells
BW6A-36	6 Plastic Bottle Wells / Front & Back Covers
BW9-36	3 Plastic Bottle Wells / Front & Back Covers / 6 Plastic Bottle Wells
BW12-36	6 Plastic Bottle Wells / Front & Back Covers / 6 Plastic Bottle Wells
BW3S-36	S.S. Bottle Holder / Front & Back Covers
BW6S-36	S.S. Bottle Holder / Front & Back Covers / S.S. Bottle Holder



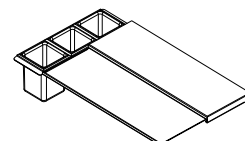
TS24IC10



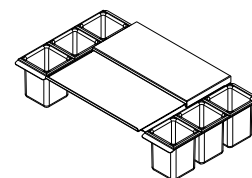
End View Standard Ice Chest



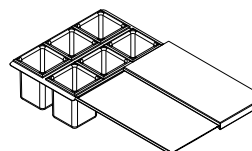
BW3S-30



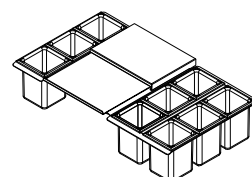
BW3-30



BW6-30



BW6A-30



BW9-30

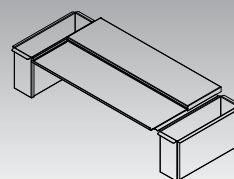
ICE CHEST

Standard Ice Chests

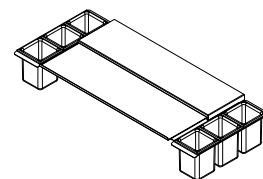
TS Series Part No.	TSD Series Part No	TSS Series Part No.	Ice Cap. (lbs.)	Ship Wt. (lbs.)	No. of Cold Plate Circuits
42" Long					
TS42IC	TSD42IC	TSS42IC	100	90	N/A
TS42IC10	TSD42IC10	TSS42IC10	100	160	10

Accessory Covers and Bottle Wells for 42" Ice Chests

Part No.	Description
ICC42	Front & Back Covers
BW3-42	3 Plastic Bottle Wells / Front & Back Covers
BW6-42	3 Plastic Bottle Wells / Front & Back Covers / 3 Plastic Bottle Wells
BW6A-42	6 Plastic Bottle Wells / Front & Back Covers
BW12-42	6 Plastic Bottle Wells / Front & Back Covers / 6 Plastic Bottle Wells
BW3S-42	S.S. Bottle Holder / Front & Back Covers
BW6S-42	S.S. Bottle Holder / Front & Back Covers / S.S. Bottle Holder



BW6S-42

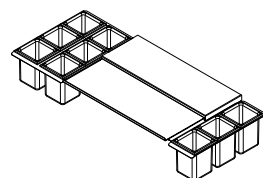


BW6-42

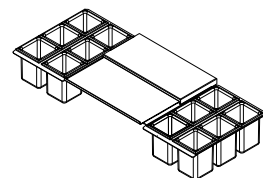
48" Long					
TS48IC	TSD48IC	TSS48IC	115	100	N/A
TS48IC10	TSD48IC10	TSS48IC10	115	170	10

Accessory Covers and Bottle Wells for 48" Ice Chests

Part No.	Description
ICC48	Front & Back Covers
BW3-48	3 Plastic Bottle Wells / Front & Back Covers
BW6-48	3 Plastic Bottle Wells / Front & Back Covers / 3 Plastic Bottle Wells
BW6A-48	6 Plastic Bottle Wells / Front & Back Covers
BW9-48	3 Plastic Bottle Wells / Front & Back Covers / 6 Plastic Bottle Wells
BW12-48	6 Plastic Bottle Wells / Front & Back Covers / 6 Plastic Bottle Wells
BW3S-48	S.S. Bottle Holder / Front & Back Covers
BW6S-48	S.S. Bottle Holder / Front & Back Covers / S.S. Bottle Holder



BW9-42



BW12-42

ICE CHEST

Full Depth 24"

TSF Series Part No.	Ice Cap. (lbs.)	Ship Wt. (lbs.)	No. of Cold Plate Circuits
18" Long			
TSF18IC	45	60	N/A
TSF18IC10	45	130	10

Accessory Covers and Bottle Wells for TSF18 Ice Chests

Part No.	Description
ICC-F18	Front & Back Covers
BWF4-18	4 Plastic Bottle Wells / Front & Back Covers
BWF12-18	12 Plastic Bottle Wells - No Covers
BWF4S-18	S.S. Bottle Holder / Front & Back Covers

24" Long

TSF24IC	65	70	N/A
TSF24IC10	65	140	10

Accessory Covers and Bottle Wells for TSF24 Ice Chests

Part No.	Description
ICC-F24	Front & Back Covers
BWF4-24	4 Plastic Bottle Wells / Front & Back Covers
BWF8-24	4 Plastic Bottle Wells / Front & Back Covers / 4 Plastic Bottle Wells
BWF8A-24	8 Plastic Bottle Wells / Front & Back Covers
BWF4S-24	S.S. Bottle Holder / Front & Back Covers
BWF8S-24	S.S. Bottle Holder / Front & Back Covers / S.S. Bottle Holder

30" Long

TSF30IC	85	80	N/A
TSF30IC10	85	150	10

Accessory Covers and Bottle Wells for TCF30 Ice Chests

Part No.	Description
ICC-F30	Front & Back Covers
BWF4-30	4 Plastic Bottle Wells / Front & Back Covers
BWF8-30	4 Plastic Bottle Wells / Front & Back Covers / 4 Plastic Bottle Wells
BWF8A-30	8 Plastic Bottle Wells / Front & Back Covers
BWF12-30	4 Plastic Bottle Wells / Front & Back Covers / 8 Plastic Bottle Wells
BWF4S-30	S.S. Bottle Holder / Front & Back Covers
BWF8S-30	S.S. Bottle Holder / Front & Back Covers / S.S. Bottle Holder

36" Long

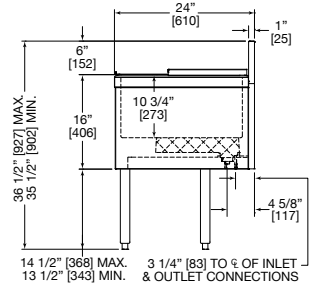
TSF36IC	105	90	N/A
TSF36IC10	105	160	10

Accessory Covers and Bottle Wells for TSF36 Ice Chests

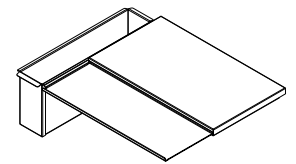
Part No.	Description
ICC-F36	Front & Back Covers
BWF4-36	4 Plastic Bottle Wells / Front & Back Covers
BWF8-36	4 Plastic Bottle Wells / Front & Back Covers / 4 Plastic Bottle Wells
BWF8A-36	8 Plastic Bottle Wells / Front & Back Covers
BWF12-36	4 Plastic Bottle Wells / Front & Back Covers / 8 Plastic Bottle Wells
BWF16-36	8 Plastic Bottle Wells / Front & Back Covers / 8 Plastic Bottle Wells
BWF4S-36	S.S. Bottle Holder / Front & Back Covers
BWF8S-36	S.S. Bottle Holder / Front & Back Covers / S.S. Bottle Holder



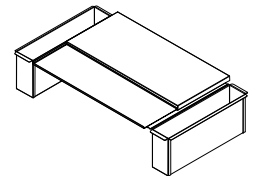
TSF24IC10



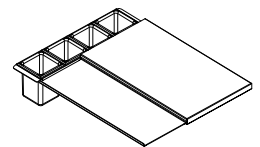
End View TSF Ice Chest



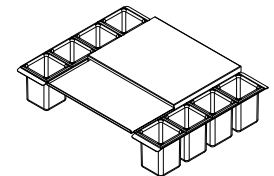
BWF4-30



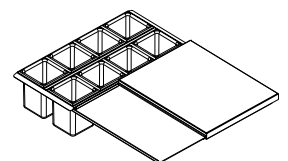
BWF8S-30



BWF4-30



BWF8-30



BWF8A-30

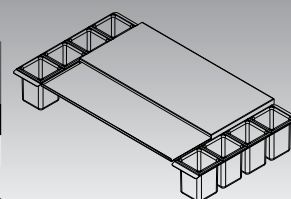
ICE CHEST

Full Depth 24"

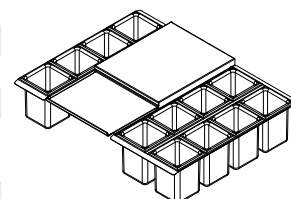
TSF Series	Ice Cap. (lbs.)	Ship Wt. (lbs.)	No. of Cold Plate Circuits
Part No.			
42" Long			
TSF42IC	125	100	N/A
TSF42IC10	125	170	10

Accessory Covers and Bottle Wells for TCF42 Ice Chests

Part No.	Description
ICC-F42	Front & Back Covers
BWF4-42	4 Plastic Bottle Wells / Front & Back Covers
BWF8-42	4 Plastic Bottle Wells / Front & Back Covers / 4 Plastic Bottle Wells
BWF8A-42	8 Plastic Bottle Wells / Front & Back Covers
BWF12-42	4 Plastic Bottle Wells / Front & Back Covers / 8 Plastic Bottle Wells
BWF16-42	8 Plastic Bottle Wells / Front & Back Covers / 8 Plastic Bottle Wells
BWF4S-42	S.S. Bottle Holder / Front & Back Covers
BWF8S-42	S.S. Bottle Holder / Front & Back Covers / S.S. Bottle Holder



BWF8-42

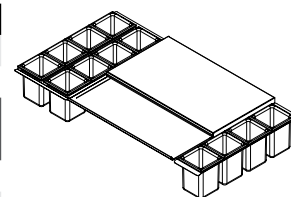


BWF12-42

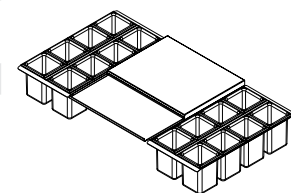
48" Long			
TSF48IC	145	110	N/A
TSF48IC10	145	180	10

Accessory Covers and Bottle Wells for TCF48 Ice Chests

Part No.	Description
ICC-F48	Front & Back Covers
BWF4-48	4 Plastic Bottle Wells / Front & Back Covers
BWF8-48	4 Plastic Bottle Wells / Front & Back Covers / 4 Plastic Bottle Wells
BWF8A-48	8 Plastic Bottle Wells / Front & Back Covers
BWF12-48	4 Plastic Bottle Wells / Front & Back Covers / 8 Plastic Bottle Wells
BWF16-48	8 Plastic Bottle Wells / Front & Back Covers / 8 Plastic Bottle Wells
BWF4S-48	S.S. Bottle Holder / Front & Back Covers
BWF8S-48	S.S. Bottle Holder / Front & Back Covers / S.S. Bottle Holder



BWF12-48



BWF16-48

ICE CHEST

Extra Capacity

TS Series	TSD Series	TSS Series	Ice Cap. (lbs.)	Ship Wt. (lbs.)	No. of Cold Plate Circuits
Part No.	Part No.	Part No.			
24" Long					
TS24IC-EC	TSD24IC-EC	TSS24IC-EC	75	100	N/A
TS24IC-EC10	TSD24IC-EC10	TSS24IC-EC10	75	170	10

Accessory Covers and Bottle Wells for 24" Ice Chests

Part No.	Description
ICC24	Front & Back Covers
BW3-24	3 Plastic Bottle Wells / Front & Back Covers
BW6-24	3 Plastic Bottle Wells / Front & Back Covers / 3 Plastic Bottle Wells
BW6A-24	6 Plastic Bottle Wells / Front & Back Covers
BW3S-24	S.S. Bottle Holder / Front & Back Covers
BW6S-24	S.S. Bottle Holder / Front & Back Covers / S.S. Bottle Holder

30" Long					
TS30IC-EC	TSD30IC-EC	TSS30IC-EC	95	110	N/A
TS30IC-EC10	TSD30IC-EC10	TSS30IC-EC10	95	180	10

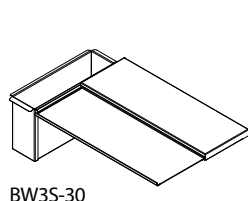
Accessory Covers and Bottle Wells for 30" Ice Chests

Part No.	Description
ICC30	Front & Back Covers
BW3-30	3 Plastic Bottle Wells / Front & Back Covers
BW6-30	3 Plastic Bottle Wells / Front & Back Covers / 3 Plastic Bottle Wells
BW6A-30	6 Plastic Bottle Wells / Front & Back Covers
BW9-30	3 Plastic Bottle Wells / Front & Back Covers / 6 Plastic Bottle Wells
BW3S-30	S.S. Bottle Holder / Front & Back Covers
BW6S-30	S.S. Bottle Holder / Front & Back Covers / S.S. Bottle Holder

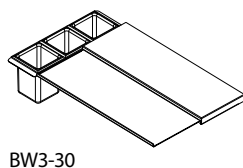
36" Long					
TS36IC-EC	TSD36IC-EC	TSS36IC-EC	115	120	N/A
TS36IC-EC10	TSD36IC-EC10	TSS36IC-EC10	115	190	10

Accessory Covers and Bottle Wells for 36" Ice Chests

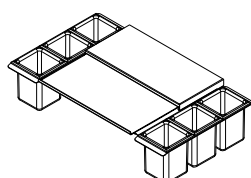
Part No.	Description
ICC36	Front & Back Covers
BW3-36	3 Plastic Bottle Wells / Front & Back Covers
BW6-36	3 Plastic Bottle Wells / Front & Back Covers / 3 Plastic Bottle Wells
BW6A-36	6 Plastic Bottle Wells / Front & Back Covers
BW9-36	3 Plastic Bottle Wells / Front & Back Covers / 6 Plastic Bottle Wells
BW12-36	6 Plastic Bottle Wells / Front & Back Covers / 6 Plastic Bottle Wells
BW3S-36	S.S. Bottle Holder / Front & Back Covers
BW6S-36	S.S. Bottle Holder / Front & Back Covers / S.S. Bottle Holder



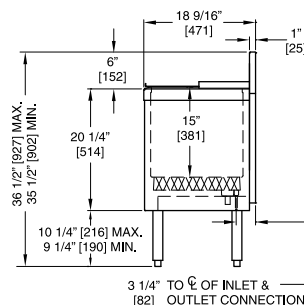
BW3S-30



BW3-30



BW6-30



End View of Extra
Capacity Ice Chest



TS24IC-EC10

ICE CHEST

Service Station

SS Series	Ice Cap. (lbs.)	Ship Wt. (lbs.)	No. of Cold Plate Circuits
Part No.			
24" Long			
SS24IC	114	100	N/A
SS24IC10	114	170	10
SS24IC20*	114	240	20

*SS24IC20 has dual 10 circuit cold plates.

Accessory Covers and Bottle Wells for 24" Ice Chests

Part No.	Description
ICC-SS24	Front & Back Covers
BW-SS6-24	3 Plastic Bottle Wells / 4 Piece Cover Set / 3 Plastic Bottle Wells
BW-SS6S-24	S.S. Bottle Holder / 4 Piece Cover Set / S.S. Bottle Holder

30" Long			
SS30IC	144	120	N/A
SS30IC10	144	190	10
SS30IC20*	144	260	20

*SS30IC20 has dual 10 circuit cold plates.

Accessory Covers and Bottle Wells for 30" Ice Chests

Part No.	Description
ICC-SS30	Front & Back Covers
BW-SS6-30	3 Plastic Bottle Wells / 4 Piece Cover Set / 3 Plastic Bottle Wells
BW-SS6S-30	S.S. Bottle Holder / 4 Piece Cover Set / S.S. Bottle Holder

36" Long			
SS36IC	174	140	N/A
SS36IC10	174	210	10
SS36IC20*	174	280	20

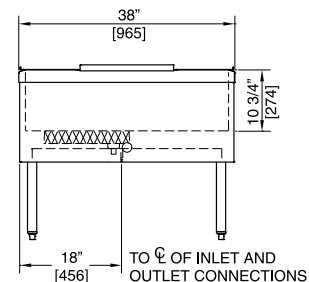
*SS36IC20 has dual 10 circuit cold plates.

Accessory Covers and Bottle Wells for 36" Ice Chests

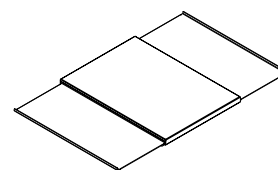
Part No.	Description
ICC-SS36	Front & Back Covers
BW-SS6-36	3 Plastic Bottle Wells / 4 Piece Cover Set / 3 Plastic Bottle Wells
BW-SS6S-36	S.S. Bottle Holder / 4 Piece Cover Set / S.S. Bottle Holder



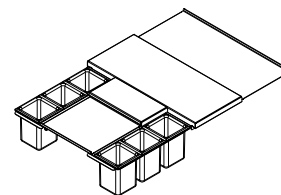
SS24IC10



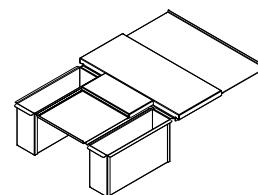
End View of Service
Station Ice Chest



ICC24



BW-SS6-24



BW-SS6S-24

ICE CHEST

Ice Chests - Drop-In

Part No.	Ice Cap. (lbs.)	Ship Wt. (lbs.)	No. of Cold Plate Circuits
17" Long (NEW)			
DI17IC	35	50	N/A
18" Long			
DI18IC	35	50	N/A
24" Long			
DI24IC	50	60	N/A
DI24IC10	50	130	10
30" Long			
DI30IC	65	70	N/A
DI30IC10	65	140	10
36" Long			
DI36IC	80	80	N/A
DI36IC10	80	150	10

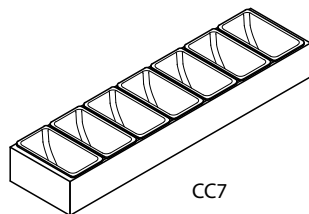
NOTE- Standard Covers are included with all Drop-In Ice Chests.

Ice Chest Accessories

Condiment Trays

Free standing stainless steel rack. Designed for Ice Chest back cover but can be located anywhere convenient. Each plastic cup is 5-1/2" x 3" x 3" deep and holds 1 pint.

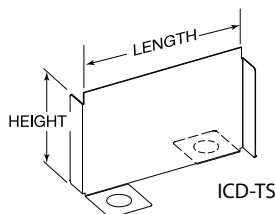
Part No.	Description
CC4	4 Cup condiment tray 12-1/2" long
CC5	5 Cup condiment tray 15-3/8" long
CC6	6 Cup condiment tray 18-1/4" long
CC7	7 Cup condiment tray 21-1/4" long



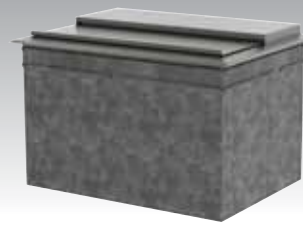
CC7

Ice Dividers - Free Standing

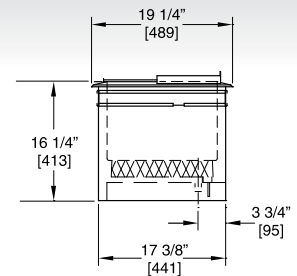
Part No.	Application	Length	Height
ICD-TS	Standard Ice Chests	15-1/16"	9-5/8"
ICD-DI	Drop-In Ice Chests	14-3/4"	9-5/8"
ICD-TSF	Full Depth Ice Chests	20-1/2"	9-5/8"
ICD-EC	Extra Capacity Ice Chests	15-1/16"	13-7/8"
ICD-SS	Service Station Ice Chests (38")	35-9/16"	9-5/8"
ICD-PT	Pass Thru Station Ice Chests (32")	29-9/16"	9-5/8"



ICD-TS



DI24IC

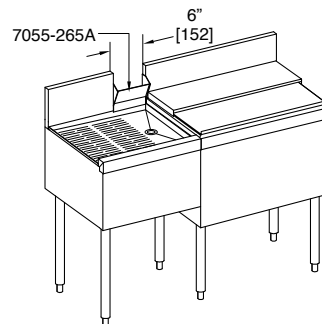


End View Drop-In Ice Chest

Backsplash Cutout

Part No.	Description
7055-265A*	For soda lines

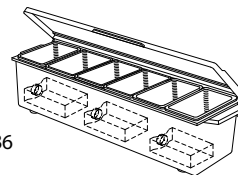
* Not applicable on TSD models or modular bar.



Condiment — Chilled

Virtually unbreakable black plastic cabinet and translucent lid. Extra deep cabinet allows space for ice water or optional refreezable water bottles. Each plastic cup holds 1 pint.

Part No.	Description
CCB6	6 Cup bin 18" long
CCB-RB	Refreezable bottle
CCB-PC	Pint cover



CCB6

SODA GUN AND FILLER SECTIONS

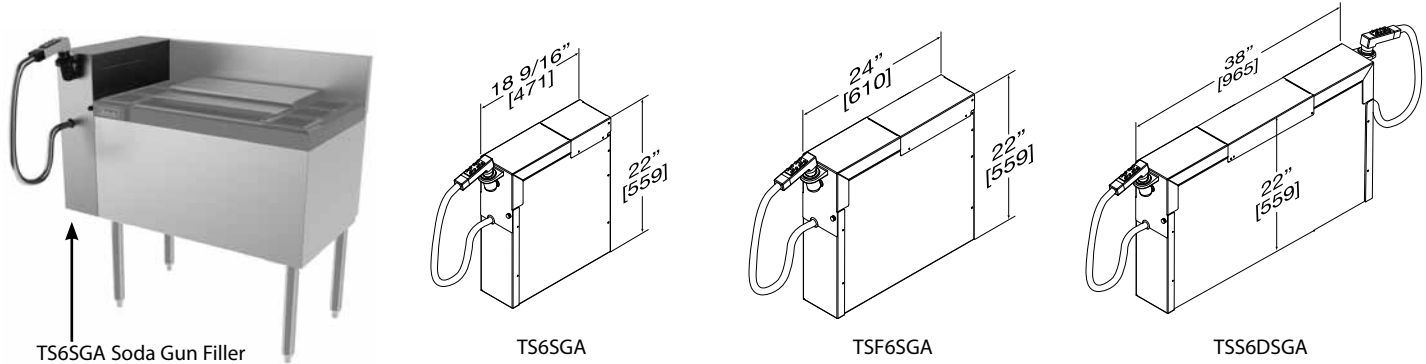
Designed for use with Wunder-Bar® or Schroeder® 8 - 14 product soda gun and manifolds. Not Included. Manifold mounts to interior side panel for easy access and service. Drip cup/cradle mounts to Top Cover. NOTE- Top Cover and Manifold Mounting Bracket for both Wunder-Bar® or Schroeder® are included on 6" Long Fillers. These parts are easily field interchangeable.

Soda Gun Filler Sections

TS Series	TSF Series	TSS Series	Application		Length	Ship Wt. (lbs.)
Part No.	Part No.	Part No.	Wunder-Bar®	Schroeder®		
TS4SGA	TSF4SGA	N/A	Yes	N/A	4"	20
N/A	N/A	TSS4.25DSGA	Yes	N/A	4-1/4"	20
TS6SGA	TSF6SGA	TSS6DSGA	Yes	Yes	6"	25

Note 1 - TSS Series Fillers accommodate Soda Guns for both Bartender and Server Sides.

Note 2 - Speed Rails can span over a Soda Gun Filler but can't mount to their front surface.

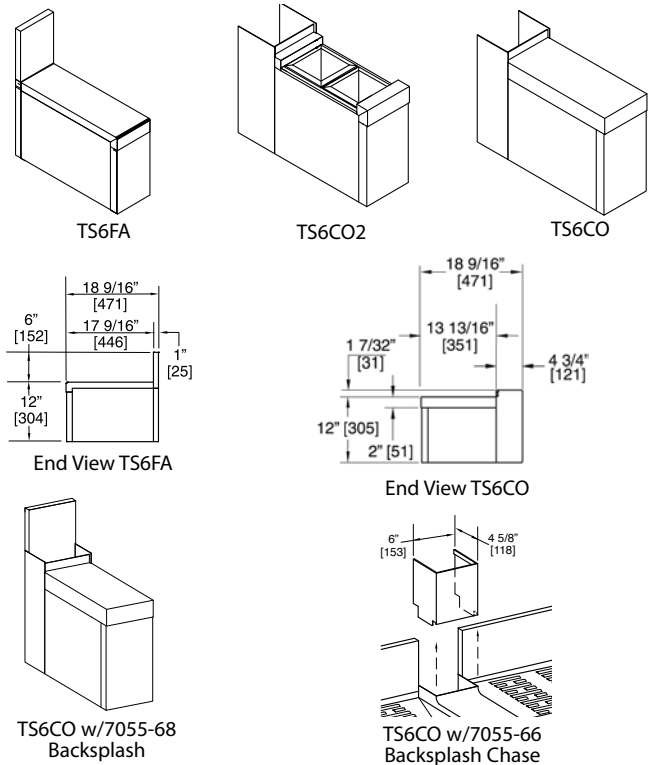


6" Filler Sections

TS Series	TSF Series	TSS Series	Description	Ship Wt. (lbs.)
Part No.	Part No.	Part No.		
TS6FA	TSF6FA	TSS6FA	With flat top	18
TS6CO	N/A	TSS6CO	With access cutout & flat top	15
TS6CO2	N/A	N/A	Access Cutout & 2 bottle wells	25
N/A	N/A	TSS6CO2	Access Cutout & 3 bottle wells	30

Accessories

Part No.	Description
7055-66	Chase for TS6CO
7055-74	Chase for TS6CO2
7055-68	Stainless steel backsplash



NOTE: Modules on this page, assembled to other modules are custom made and cannot be returned for credit.



8300 West Good Hope Road • Milwaukee, WI 53223 • Phone 414-353-7060 • Fax 414-353-7069
Toll Free 800-558-5592 • E-Mail: Perlick@Perlick.com • www.Perlick.com

DRAINBOARDS/EQUIPMENT STANDS

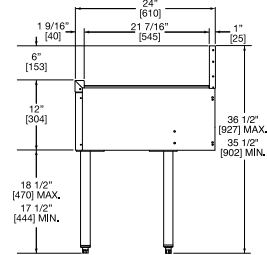
Standard Drainboards

TS Series Part No.	TSF Series Part No.	TSD Series Part No.	TSS Series Part No.	Length	Ship Wt. (lbs.)
TS12	TSF12	TSD12	TSS12	12"	35
TS13	TSF13	TSD13	N/A	13"	35
TS14	TSF14	TSD14	N/A	14"	37
TS15	TSF15	TSD15	N/A	15"	37
TS16	TSF16	TSD16	N/A	16"	38
TS17	TSF17	TSD17	N/A	17"	38
TS18	TSF18	TSD18	TSS18	18"	40
TS19	TSF19	TSD19	N/A	19"	40
TS20	TSF20	TSD20	N/A	20"	42
TS21	TSF21	TSD21	N/A	21"	42
TS22	TSF22	TSD22	N/A	22"	44
TS23	TSF23	TSD23	N/A	23"	44
TS24	TSF24	TSD24	TSS24	24"	45
TS30	TSF30	TSD30	TSS30	30"	50
TS36	TSF36	TSD36	TSS36	36"	60
TS42	TSF42	TSD42	TSS42	42"	90
TS48	TSF48	TSD48	TSS48	48"	115

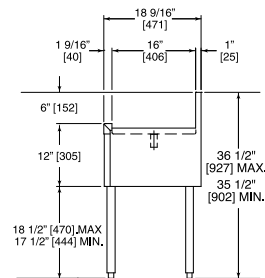


TSF24 and TS24

Drainboards in
1" Increments



TSF End View Drainboard



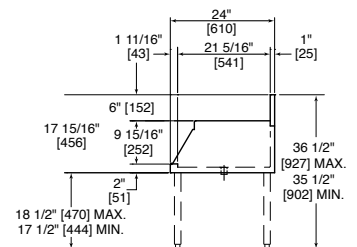
TS End View Drainboard

Drop-Down Drainboards

TS Series Part No.	TSS Series Part No.	Length	Ship Wt. (lbs.)
TS12DD	TSS12DD	12"	30
TS18DD	TSS18DD	18"	35
TS24DD	TSS24DD	24"	40



TS18DD



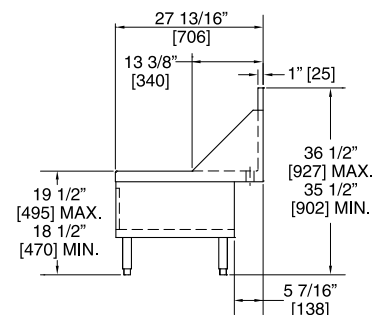
End View Drop Down Drainboard

Equipment Stands

Part No.	Length	Ship Wt. (lbs.)
ES18	18"	45
ES24	24"	65



ES18



End View Equipment Stand

NOTE: Modules on this page, assembled to other modules are custom made and cannot be returned for credit.

BLENDER STATIONS

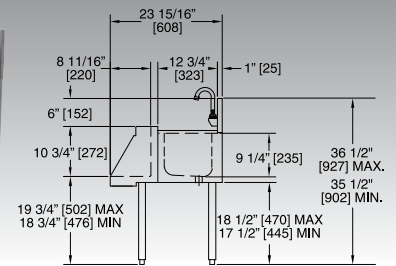
Blenders with Sink

TS Series	TSD Series	TSS Series		
Part No.	Part No.	Part No.	Length	Ship Wt. (lbs.)
TS12BLW	TSD12BLW	TSS12BLW*	12"	50
TS14BLW	TSD14BLW	N/A	14"	55
TS18BLW	TSD18BLW	TSS18BLW*	18"	60

* Water faucet sold separately with TSS blender station, see page 21.



TS12BLW



End View Blender Station w/Sink

Accessories for Blender Stations

Accessory "Wall" Mount Water Faucets for TS Series Blender Stations

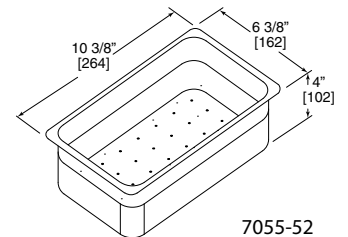
Part No.	Description
924GN	Wall Faucet with Goose Neck Spout, 2.2 GPM (8.3 L/min)
924GN-LF	Wall Faucet with Goose Neck Spout, "Lead Free", 2.2 GPM (8.3 L/min)

Accessory "Deck" Mount Water Faucets for TSD & TSS Series Blender Stations

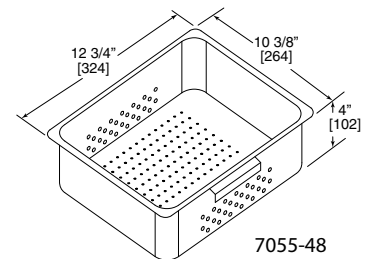
Part No.	Description
926GN	Deck Faucet with Goose Neck Spout, 2.2 GPM (8.3 L/min)
926GN-LF	Deck Faucet with Goose Neck Spout, "Lead Free", 2.2 GPM (8.3 L/min)

Misc. Accessories for Blender Stations

Part No.	Description
43688A	Water Conserving Aerator, 0.5 GPM (1.9 L/min)
43688F	Water Conserving Aerator, 1.5 GPM (5.7 L/min)
7055-52	Perforated Wet Waste Pan for 12" & 14" Blenders, Clear Plastic, 2.7 quart
7055-48	Perforated Wet Waste Pan for 18" Blender, Stainless, 7 quart
736B	Towel Ring, Field Installed
736BIN	Towel Ring, Factory Installed



7055-52



7055-48

NOTE - See page 34 for additional faucet options and accessories.



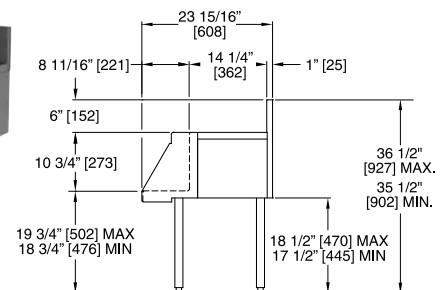
736BIN Towel Ring

Blender Station with Flat Top

TS Series	TSD Series	TSS Series		
Part No.	Part No.	Part No.	Length	Ship Wt. (lbs.)
TS12BLD	TSD12BLD	TSS12BLD	12"	45
TS18BLD	TSD18BLD	TSS18BLD	18"	55



TSD12BLD



End View Blender Station w/Flat Work Surface

BRIDGE UNITS WITH FLAT TOP/TSS DECK ASSEMBLY

Bridge Units with Flat Top

Requires support by adjacent Underbar Equipment or Accessory Leg Kit.

TS Series Part No.	TSF Series Part No.	Length	Ship Wt. (lbs.)
TS12BA	TSF12BA	12"	15
TS13BA	TSF13BA	13"	18
TS14BA	TSF14BA	14"	18
TS15BA	TSF15BA	15"	18
TS16BA	TSF16BA	16"	18
TS17BA	TSF17BA	17"	18
TS18BA	TSF18BA	18"	20
TS19BA	TSF19BA	19'	23
TS20BA	TSF20BA	20"	23
TS21BA	TSF21BA	21"	23
TS22BA	TSF22BA	22"	23
TS23BA	TSF23BA	23"	23
TS24BA	TSF24BA	24"	25



TSF24BA
Bridge Unit shown with Glass Rack Dolly (not included)

NOTE: TSF Bridge units can be used with adjacent TSD modules

TSS 3" Deck Assemblies

Joins TSS modules to form back-to-back service stations.
Water faucet sold separately.

Part No.	Description	Ship Wt. (lbs.)
TSS-B0312	12" Deck	10
TSS-B0318	18" Deck	11
TSS-B0324	24" Deck	12
TSS-B0330	30" Deck	13
TSS-B0336	36" Deck	14
TSS-B0342	42" Deck	15
TSS-B0348	48" Deck	16
TSS-B0354	54" Deck	17
TSS-B0360	60" Deck	18



TSS SERVICE CENTER
formed with No. TSS-B0330
3" Connecting Deck

Accessory Water Faucets for TSS Series Deck Assemblies

Part No.	Description
926GN	Deck Faucet with Goose Neck Spout, 2.2 GPM (8.3 L/min)
926-6	Deck Faucet with 6" Swing Spout, 2.2 GPM (8.3 L/min)
926-10	Deck Faucet with 10" Swing Spout, 2.2 GPM (8.3 L/min)
926DJ	Deck Faucet with 18" Double Jointed Swing Spout, 2.2 GPM (8.3 L/min)

Accessory "Lead Free" Water Faucets for TSS Series Deck Assemblies

Part No.	Description
926GN-LF	Deck Faucet with Goose Neck Spout, "Lead Free", 2.2 GPM (8.3 L/min)
926-6LF	Deck Faucet with 6" Swing Spout, "Lead Free", 2.2 GPM (8.3 L/min)
926-10LF	Deck Faucet with 10" Swing Spout, "Lead Free", 2.2 GPM (8.3 L/min)
926DJ-LF	Deck Faucet with 18" Double Jointed Swing Spout, "Lead Free", 2.2 GPM (8.3 L/min)

ICE CREAM CENTER/INSULATED STORAGE CHEST

Ice Cream Center

24" Wide Cabinet with Drop-In Ice Cream Unit

Includes five year compressor warranty

TS Series	TSD Series	TSS Series	
Part No.	Part No.	Part No.	Ship Wt. (lbs.)
TS24DC	TSD24DC	TSS24DC	199

*Order #8000 Drop-In Ice Cream Unit Separately.

Drop-In Ice Cream Unit Only

Includes five year compressor warranty.

16-1/8" Wide x 16-1/8" Deep x 26-3/4" High

Part No.	Description	Ship Wt. (lbs.)
8000		114
8000-230	230 V/50Hz/CE marked	114

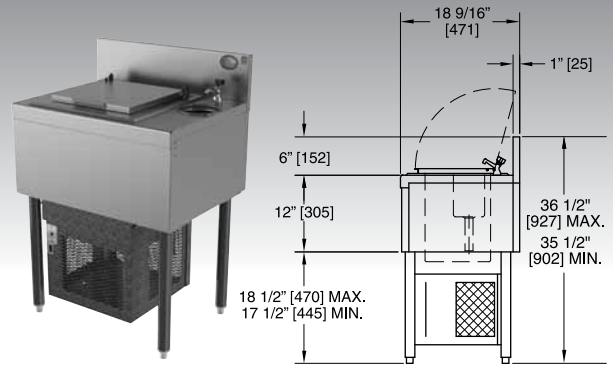
Second Year Extended Parts and Labor Warranty

Refer to page 73 for additional information.

Part No.	Description
730	Second year extended parts and labor warranty

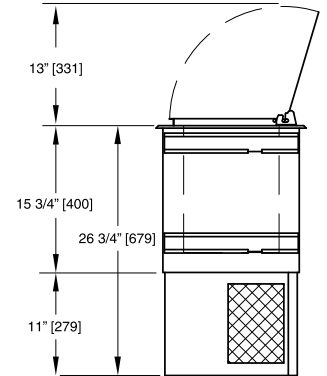
Accessories for Drop-In Ice Cream Unit

Part No.	Description
8005-1	5" Disher well.
8005-2	Faucet for disher well.

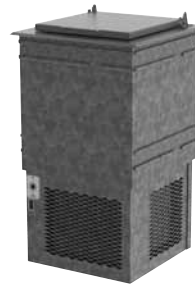


TS24DC
(Shown with 8000
Ice Cream Unit
Order Separately)

End View Ice Cream Cabinet



End View Drop-In Ice
Cream Unit



8000

Insulated Storage Chests

6" Wide

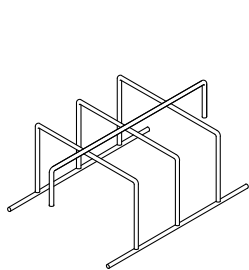
TS Series	TSD Series	TSS Series		
Part No.	Part No.	Part No.	Description	Ship Wt. (lbs.)
TS6U	TSD6U	TSS6U	6" Chest	30
TS6U2	TSD6U2	TSS6U2	6" Chest w/3 bottle wells	32

12" Wide

TS12U	TSD12U	TSS12U	12" Chest	36
TS12U2	TSD12U2	TSS12U2	12" Chest w/6 bottle wells	38
TS12U3	TSD12U3	TSS12U3	12" Chest w/8 condiment cups	38

Accessories

Part No.	Description
59543-1	8 Bottle wire rack divider for TS12U



59543-1



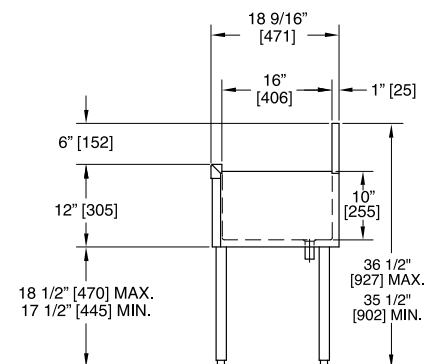
TS6U2



TS12U3



TS12U2



End View Storage Chests

NOTE: Modules on this page, assembled to other modules are custom made and cannot be returned for credit.



8300 West Good Hope Road • Milwaukee, WI 53223 • Phone 414-353-7060 • Fax 414-353-7069
Toll Free 800-558-5592 • E-Mail: Perlick@Perlick.com • www.Perlick.com

HAND SINKS

Hand Sinks

TS Series	TSD Series	TSS Series	Soap Disp. Mounting	Towel Type	Length	Ship Wt. (lbs.)
Part No.	Part No.	Part No.				
TS12HS	TSD12HS	TSS12HS	N/A	N/A	12"	45
TS12HSN	N/A	N/A	Splash	Folded	12"	50
TS18HSN	TSD18HSN	N/A	Deck	Folded	18"	60
TS18HST	TSD18HST	N/A	Deck	Rolled	18"	60

Accessories

"Wall" Mount Water Faucets for TS Series Hand Sinks

Part No.	Description
924GN	Wall Faucet with Goose Neck Spout, 2.2 GPM (8.3 L/min)
924GN-LF	Wall Faucet with Goose Neck Spout, "Lead Free", 2.2 GPM (8.3 L/min)

"Deck" Mount Water Faucets for TSD and TSS Series Hand Sinks

Part No.	Description
926GN	Deck Faucet with Goose Neck Spout, 2.2 GPM (8.3 L/min)
926GN-LF	Deck Faucet with Goose Neck Spout, "Lead Free", 2.2 GPM (8.3 L/min)

Misc. Accessories for Hand Sinks

Part No.	Description
UAC-EFA	Faucet Control, Electronic, Battery Operated Mounts on any faucet in minutes. Simply remove the aerator and install controller to end of spout. Set the faucet handles to your desired water flow and temperature.)
UAC-HWFC	Faucet Control, Mechanical Mounts on any faucet in minutes. Simply remove the aerator and install controller to end of spout. Set the faucet handles to your desired water flow and temperature.
43705	Wrist Blade Handles, Pair, Field Installed (Not Applicable on TS12HSN)
67420-1*	Water Valve, Single Pedal, Foot Operated, 1/2" NPT
67420-2*	Water Valve, Dual Pedal, Foot Operated, 1/2" NPT
67419-6W*	Swing Spout, 6", Wall Mounted, for use with foot operated water valve
67419-6D*	Swing Spout, 6", Deck Mounted, for use with foot operated water valve
43688A	Water Conserving Aerator, 0.5 GPM (1.9 L/min), Field Installed
43688F	Water Conserving Aerator, 1.5 GPM (5.7 L/min), Field Installed
7055-270R	Folded Towel Dispenser for TS12HS Series Hand Sink, Field Installed
7055-270	Folded Towel Dispenser for TS12HS Series Hand Sink, Factory Installed
7055-269A	Soap Dispenser, Splash Mounted, Factory Installed (Not Applicable on TSD Series Underbar)
736B	Towel Ring, Field Installed
736BIN	Towel Ring, Factory Installed
7055-48	Perforated Wet Waste Pan for 12" and 18" Hand Sinks, Stainless, 7 quart
C30872-1	Perforated Cover, converts bowl area on TS12HS Sink into a Drainboard

* Applicable for TS12HS and TS12HSN Only.

Hand Sink - Wall Mounted

Part No.	Description	Length	Ship Wt. (lbs.)
HS17WM	Wall mount sink w/faucet and goose neck spout	17"	11



TS12HSN

TS18HST



UAC-EFA



UAC-HWFC



43705



67420-1



67420-2



7055-270



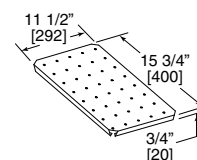
67419-6W



7055-269A



67419-6D



C30872-1



HS17WM

MULTI-TANK SINKS

Sinks with 2 Tanks

TS Series	TSD Series	Overall	Tank	Drainboard	Ship Wt.
Part No.	Part No.	Length	Location	Length	(lbs.)
TS22C	TSD22C	24" (2')	Center	N/A	65

Accessory "Wall" Mount Water Faucets for TS Series 2 Tank Sinks

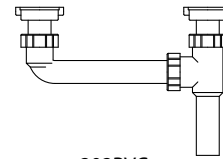
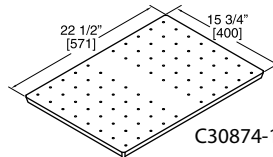
Part No.	Description
924-6	Wall Faucet with 6" Swing Spout, 2.2 GPM (8.3 L/min)
924-6LF	Wall Faucet with 6" Swing Spout, "Lead Free", 2.2 GPM (8.3 L/min)

Accessory "Deck" Mount Water Faucets for TSD and TSS Series 2 Tank Sinks

926-6	Deck Faucet with 6" Swing Spout, 2.2 GPM (8.3 L/min)
926-6LF	Deck Faucet with 6" Swing Spout, "Lead Free", 2.2 GPM (8.3 L/min)

Misc. Accessory for 2 Tank Sinks

C30874-1	Perforated Cover, converts bowl area on TS22C Sink into a Drainboard
202PVC	Drain Connection Kit for Sinks with 2 Tanks



202PVC

Sinks with 3 Tanks

TS Series	TSD Series	Overall	Tank	Drainboard	Ship Wt.
Part No.	Part No.	Length	Location	Length	(lbs.)
TS33C	TSD33C	36" (3')	Center	N/A	95
TS43L	TSD43L	48" (4')	Left	12"	115
TS43R	TSD43R	48" (4')	Right	12"	115
TS53C	TSD53C	60" (5')	Center	2 @ 12"	125
TS63C	TSD63C	72" (6')	Center	2 @ 18"	145
TS73C	TSD73C	84" (7')	Center	2 @ 24"	160
TS83C	TSD83C	96" (8')	Center	2 @ 30"	195

Accessory "Wall" Mount Water Faucets for TS Series 3 Tank Sinks

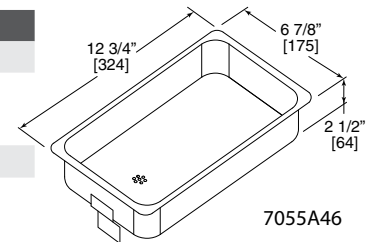
Part No.	Description
924-10	Wall Faucet with 10" Swing Spout, 2.2 GPM (8.3 L/min)
924-10LF	Wall Faucet with 10" Swing Spout, "Lead Free", 2.2 GPM (8.3 L/min)

Accessory "Deck" Mount Water Faucets for TSD and TSS Series 3 Tank Sinks

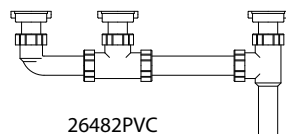
926-10	Deck Faucet with 10" Swing Spout, 2.2 GPM (8.3 L/min)
926-10LF	Deck Faucet with 10" Swing Spout, "Lead Free", 2.2 GPM (8.3 L/min)

Misc. Accessory for 3 Tank Sinks

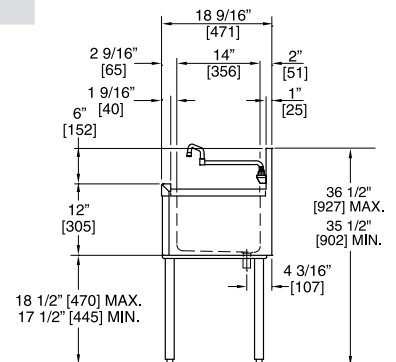
26482PVC	Drain Connection Kit for Sinks with 3 Tanks
7055A46	Wet Waste Pan - Drains into Standpipe
CR-S01	California Health Code, "Integral" Drainboards (for TS43L/R w/1 Drainboard)
CR-S02	California Health Code, "Integral" Drainboards (for sinks w/ 2 Drainboards)



7055A46



26482PVC



End View Sink Module

NOTE: Modules on this page, assembled to other modules are custom made and cannot be returned for credit.



8300 West Good Hope Road • Milwaukee, WI 53223 • Phone 414-353-7060 • Fax 414-353-7069
Toll Free 800-558-5592 • E-Mail: Perlick@Perlick.com • www.Perlick.com

MULTI-TANK/EXTRA CAPACITY SINKS

Sinks with 4 Tanks

TS Series Part No.	TSD Series Part No.	Overall Length	Tank Location	Drainboard Length	Ship Wt. (lbs.)
TS44C	TSD44C	48" (4')	Center	N/A	125
TS64C	TSD64C	72" (6')	Center	2 @ 12"	150
TS74C	TSD74C	84" (7')	Center	2 @ 18"	165
TS84C	TSD84C	96" (8')	Center	2 @ 24"	200
TS94C	TSD94C	108" (9')	Center	2 @ 30"	220

Accessory "Wall" Mount Water Faucets for TS Series 4 Tank Sinks

Part No.	Description
924DJ	Wall Faucet with 18" Double Jointed Swing Spout, 2.2 GPM (8.3 L/min)
924DJ-LF	Wall Faucet with 18" Double Jointed Swing Spout, "Lead Free", 2.2 GPM (8.3 L/min)

Accessory "Deck" Mount Water Faucets for TSD and TSS Series 4 Tank Sinks

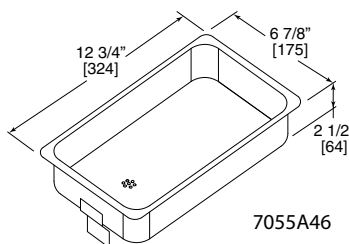
926DJ	Deck Faucet with 18" Double Jointed Swing Spout, 2.2 GPM (8.3 L/min)
926DJ-LF	Deck Faucet with 18" Double Jointed Swing Spout, "Lead Free", 2.2 GPM (8.3 L/min)

Misc. Accessory for 4 Tank Sinks

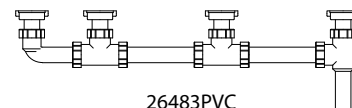
26483PVC	Drain Connection Kit for Sinks with 4 Tanks
7055A46	Wet Waste Pan - Drains into Standpipe
CR-S02	California Health Code, "Integral" Drainboards (for sinks w/ 2 Drainboards)



TS64C



7055A46



26483PVC

Sinks with Extra Capacity Tanks

These Sinks have 16 1/4" long x 16" wide x 15" deep tanks to meet various regional health codes.

TS Series Part No.	TSD Series Part No.	Length	Number of Tanks	Spout Type	Ship Wt. (lbs.)
TS181CA*	TSD181CA*	18"	1	6" Swing	105
TS362CA*	TSD362CA*	36"	2	6" Swing	155
TS543CA†	TSD543CA†	54"	3	(2) 6" Swing	205
TS724CA†	TSD724CA†	72"	4	(2) 6" Swing	255

* For 1 & 2 Tank Sinks with a "Lead Free Faucet", add-LF suffix to part number (additional price)

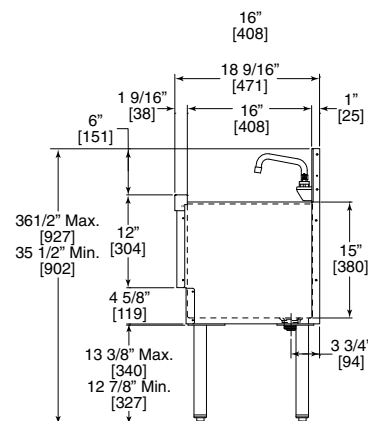
† For 3 & 4 Tank Sinks with a "Lead Free Faucet", add-LF suffix to part number (additional price)



TS543CA



TS181CA



STORAGE BINS & CABINETS

Storage Bins for Glassware

Part No.	Description	Length	Ship Wt. (lbs.)
7055A	Without top	24"	70
7055A-D	With drainboard top & 2 glass rack slides	24"	80

Accessories

Part No.	Description
7055A5	Drainboard top
7055-6	Stainless steel stationary shelf
7055-7	Glass rack slide - stationary
7055-10	Slanted liquor bracket. .
7055-77	Glass rack tray - roll out

Storage Cabinets with Full Drainboard Top ("TSF" Depth) - Less Doors (includes one shelf)

Part No.	Length	Ship Wt. (lbs.)
SC12*	12"	30
SC18*	18"	40
SC24*	24"	80
SC30*	30"	90
SC36	36"	100
SC42	42"	115
SC48	48"	125

* Can be factory assembled to SC18W. Specify left or right location of SC18W.

Storage Cabinets with Full Drainboard Top ("TS" Depth) - Less Doors (includes one shelf)

Part No.	Length	Ship Wt. (lbs.)
SC12-18	12"	24
SC18-18	18"	32
SC24-18	24"	52
SC30-18	30"	64
SC36-18	36"	80
SC42-18	42"	90
SC48-18	48"	100

Storage Cabinets with Sink and Waste Chute - Less Door and Shelf

Part No.	Length	Ship Wt. (lbs.)
SC18W*	18"	50

* Can be factory assembled to SC12, SC18, SC24 and SC30. Specify left or right location of SC18W.

Misc. Accessory for SC18W Storage Cabinet

Part No.	Description
924GN	Wall Faucet with Goose Neck Spout, 2.2 GPM (8.3 L/min)
924GN-LF	Wall Faucet with Goose Neck Spout, "Lead Free", 2.2 GPM (8.3 L/min)

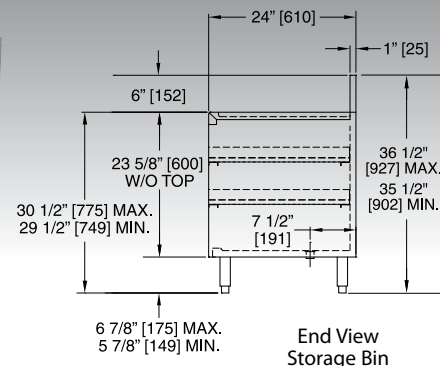
Accessories for Storage Cabinets

Factory Installed Doors*

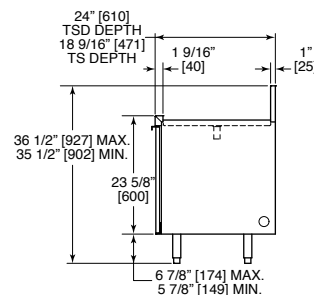
Part No.	Description
SC-DR12	Door, 12" (Specify left or right hinging)
SC-DR18	Door, 18" (Specify left or right hinging)



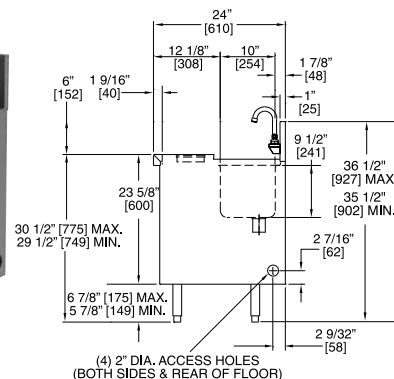
7055A-D



SC30



SC18W
(Shown with
Optional Door)



Part No.	Description
SC-DR24	Door, 24" (Specify left or right hinging)
SC-DR30	Door set for 30" cabinet
SC-DR36	Door set for 36" cabinet
SC-DR42	Door set for 42" cabinet
SC-DR48	Door set for 48" cabinet
SC-DRLK	Door lock (per door)

*Add "R" suffix for field installed.

Miscellaneous

Part No.	Description
SC-WB	Wastebasket, plastic (14-1/2"x10"x15")
SC-ES	End splash (specify left or right location)

NOTE: Modules on this page, assembled to other modules are custom made and cannot be returned for credit.



8300 West Good Hope Road • Milwaukee, WI 53223 • Phone 414-353-7060 • Fax 414-353-7069
Toll Free 800-558-5592 • E-Mail: Perlick@Perlick.com • www.Perlick.com

GLASS AND CHEMICAL STORAGE CABINETS

Cabinets with Sink (24" deep)

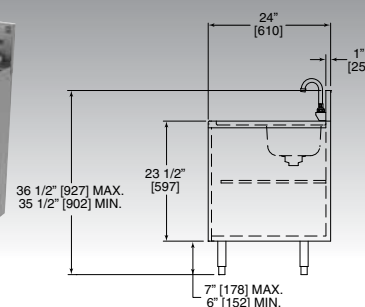
Part No.	Description	Length
7057-1	Glass Storage and Chemical Cabinet with Sink & Spray Hose	24"
7057-3	Chemical Cabinet with Sink & Spray Hose	12"

Accessory "Wall" Mount Water Faucets for Glass and Chemical Cabinets

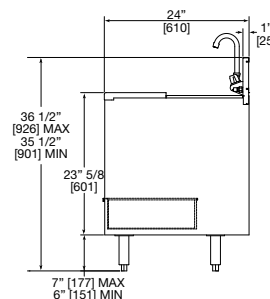
Part No.	Description
924GN	Wall Faucet with Goose Neck Spout, 2.2 GPM (8.3 L/min)
924GN-LF	Wall Faucet with Goose Neck Spout, "Lead Free", 2.2 GPM (8.3 L/min)



7057-1



7057-3

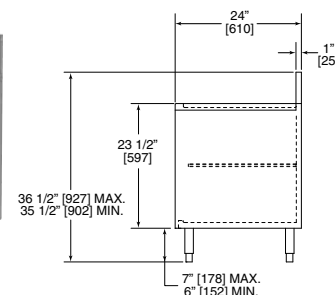


Cabinets with Recessed or Flat Top (24" deep)

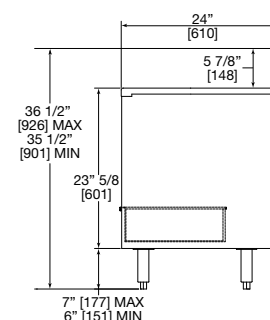
Part No.	Description	Length
7057-2	Glass Storage Cabinet with Recessed Top	24"
7057-4	Chemical Cabinet with Flat Top	12"



7057-2



7057-4



LIQUOR DISPLAY/BEER DRAINER

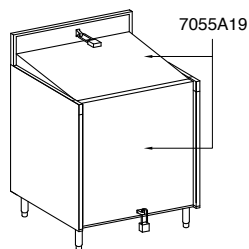
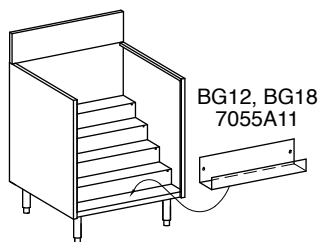
Liquor Display Cabinet

Part No.	Length	Ship Wt. (lbs.)
TS12LS	12"	40
TS18LS	18"	45
TS24LS	24"	50
7055A3	24"	55

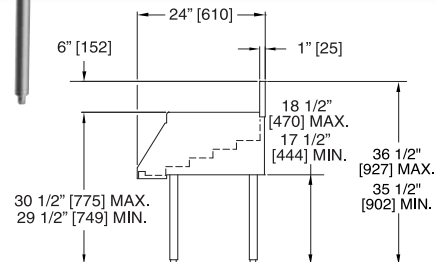
Accessories

Part No.	Description
BG12	Bottle guardrail set for TS12LS
BG18	Bottle guardrail set for TS18LS
BG24	Bottle guardrail set for TS24LS
7055A19*	*Two-piece locking cover for 7055A3
7055A11	Bottle guardrail set for 7055A3

*Factory installed only.



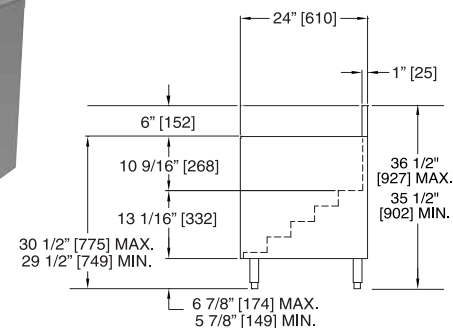
TS18LS



End View
18" Liquor Display



7055A3



End View
24" Liquor Display

Underbar Beer Drainer

TS Series	TSD Series		Ship Wt. (lbs.)
Part No.	Part No.	Description	
7055A8	7055D8	18" drainer for 4 faucets	30
7055A9	7055D9	24" drainer for 6 faucets	40

Accessories

Part No.	Description
63262	Pair of legs



7055D9

(Space Saver Dispensing Head Not Included)

TRASH RECEPTACLES

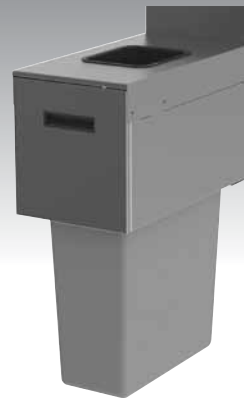
Bridge Trash

Requires Support by adjacent Underbar Equipment or Accessory End Panel & Leg Kit

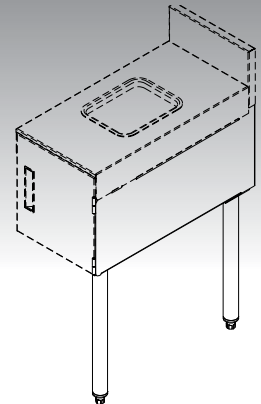
TSF Series Part No.	Length	Ship Wt. (lbs.)
TSF12BTA	12"	25

Misc. Accessories for Bridge Trash

Part No.	Description
BRG-PL	End Panel and Pair of Legs (specify Left or Right, One Side Only)
BRG-ES	End Splash, TSF (specify Left or Right)
57265	Wastebasket, Grey, Slim Jim, (11" L x 20" W x 30" H)
58644	Wastebasket, Steel, Almond (11" L x 20" W x 30" H)



TSF12BTA



End Panel with Pair of Legs

Trash Receptacle

Requires Support by adjacent Underbar Equipment or Accessory Panel Leg Kit

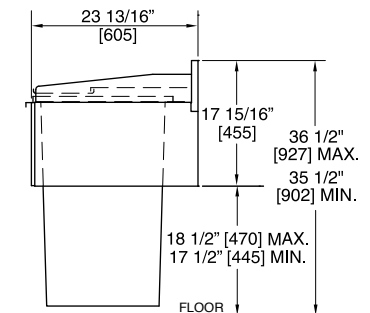
Part No.	Length	Ship Wt.(lbs.)
TS12TRA	12"	35

Misc. Accessories for TS12TRA Trash Receptacle

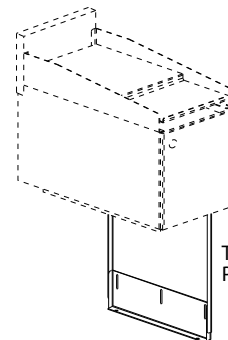
Part No.	Description
TRA-PL	Panel Leg (specify Left or Right, One Side Only)
57265	Wastebasket, Grey, Slim Jim, (11" L x 20" W x 30" H)
58644	Wastebasket, Steel, Almond (11" L x 20" W x 30" H)



TS12TRA



End View Trash Receptacle



TRA-PL
Panel Leg Kit

Apron Trash Cut-out for Trash Receptacle

Specify location (left or right) on any 12" to 30" long Drainboard. Requires adjacent support.

Part No.	Length
TR12CO	12"

Misc. Accessory for Apron Trash Cut-out

Part No.	Description
58643	Wastebasket, Grey, (11" L x 15 1/4" W x 19-7/8" H)



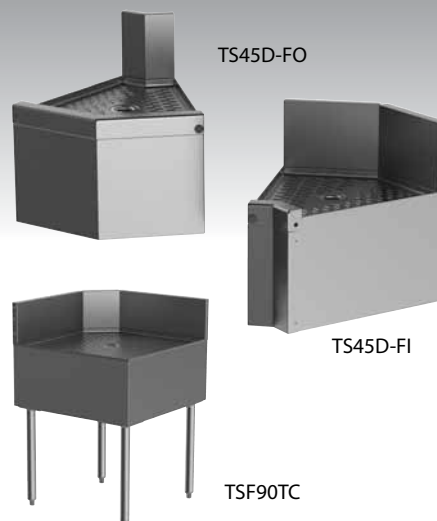
TR12CO

58643

CORNER FILLER SECTIONS

Corner Filler Sections with Drainboard Top

TS Series Part No.	TSF Series Part No.	Angle	Description
Inside Corners			
TS45D-FI*	TSF45D-FI*	45°	Drainboard, Full Corner, Inside
TS60D-FI*	TSF60D-FI*	60°	Drainboard, Full , Inside
TS75D-FI*	TSF75D-FI*	75°	Drainboard, Full Corner, Inside
TS90D-FI	TSF90D-FI	90°	Drainboard, Full Corner, Inside
TS90D-CI	TSF90D-CI	90°	Drainboard, Clip Corner, Inside
TS90TC	TSF90TC	90°	Drainboard, Trim Corner, Inside



Outside Corner

TS45D-FO*	TSF45D-FO*	45°	Drainboard, Full Corner, Outside
-----------	------------	-----	----------------------------------

Misc. Accessories for Corner Filler Sections with Drainboard Tops

*63555 Pair of legs for one side of 45°, 60° and 75° Corner Filler Sections

Note- Equipment legs are included on 90° Corner Filler Sections.

Corner Drainboards

TS Series Part No.	TSD Series Part No.	Length	Splash Location	Ship Wt. (lbs.)
Inside Corners				
TS24LIC	TSD24LIC	24"	Left Corner	55
TS24RIC	TSD24RIC	24"	Right Corner	55

Note- Equipment legs are included on Corner Drainboards.

Corner Filler Sections with Flat Top

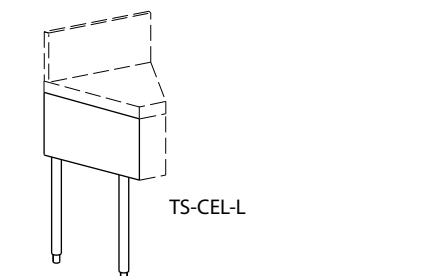
TS Series Part No.	TSF Series Part No.	Angle	Description
Inside Corners			
TS05F-I	TSF05F-I	5°	Flat Top, Clip Corner, Inside
TS10F-I	TSF10F-I	10°	Flat Top, Clip Corner, Inside
TS15F-I	TSF15F-I	15°	Flat Top, Clip Corner, Inside
TS20F-I	TSF20F-I	20°	Flat Top, Clip Corner, Inside
TS25F-I	TSF25F-I	25°	Flat Top, Clip Corner, Inside
TS30F-I	TSF30F-I	30°	Flat Top, Clip Corner, Inside
TS45F-I	TSF45F-I	45°	Flat Top, Clip Corner, Inside
TS60F-I	TSF60F-I	60°	Flat Top, Clip Corner, Inside
TS75F-I	TSF75F-I	75°	Flat Top, Clip Corner, Inside
TS90F-I	TSF90F-I	90°	Flat Top, Clip Corner, Inside
TS90F-FI	TSF90F-FI	90°	Flat Top, Full Corner, Inside

Outside Corner

TS Series Part No.	TSF Series Part No.	Angle	Description
TS15F-O	TSF15F-O	15°	Flat Top, Clip Corner, Outside
TS20F-O	TSF20F-O	20°	Flat Top, Clip Corner, Outside
TS25F-O	TSF25F-O	25°	Flat Top, Clip Corner, Outside
TS30F-O	TSF30F-O	30°	Flat Top, Clip Corner, Outside
TS45F-O	TSF45F-O	45°	Flat Top, Clip Corner, Outside
TS60F-O	TSF60F-O	60°	Flat Top, Clip Corner, Outside
TS90F-O	TSF90F-O	90°	Flat Top, Clip Corner, Outside

Misc. Accessories for Corner Filler Sections with Flat Top

TS-CEL-L	TSF-CEL-L	Corner Filler End Panel & Leg Kit, Left Side
TS-CEL-R	TSF-CEL-R	Corner Filler End Panel & Leg Kit, Right Side



SPEED RAILS

Speed Rails

Single Speed Rails*

Part No.	Length
SR-S12	12"
SR-S13	13"
SR-S14	14"
SR-S15	15"
SR-S16	16"
SR-S17	17"
SR-S18	18"
SR-S19	19"
SR-S20	20"
SR-S21	21"
SR-S22	22"
SR-S23	23"
SR-S24	24"
SR-S28	28"
SR-S30	30"
SR-S34	34"
SR-S36	36"
SR-S42	42"
SR-S48	48"
SR-S54	54"
SR-S60	60"
SR-S66	66"
SR-S72	72"
SR-S78	78"
SR-S84	84"
SR-S90	90"
SR-S96	96"

*Add "R" suffix for field installed.

Dual Speed Rails*

Part No.	Length
SR-D12	12"
SR-D13	13"
SR-D14	14"
SR-D15	15"
SR-D16	16"
SR-D17	17"
SR-D18	18"
SR-D19	19"
SR-D20	20"
SR-D21	21"
SR-D22	22"
SR-D23	23"
SR-D24	24"
SR-D28	28"
SR-D30	30"
SR-D34	34"
SR-D36	36"
SR-D42	42"
SR-D48	48"

*Add "R" suffix for field installed.

Single Locking Speed Rails*

Part No.	Length
SR-SL18	18"
SR-SL19	19"
SR-SL20	20"
SR-SL21	21"
SR-SL22	22"
SR-SL23	23"
SR-SL24	24"
SR-SL28	28"
SR-SL30	30"
SR-SL34	34"
SR-SL36	36"
SR-SL42	42"
SR-SL48	48"

*Add "R" suffix for field installed.

Dual Locking Speed Rails*

Part No.	Length
SR-DL18	18"
SR-DL19	19"
SR-DL20	20"
SR-DL21	21"
SR-DL22	22"
SR-DL23	23"
SR-DL24	24"
SR-DL28	28"
SR-DL30	30"
SR-DL34	34"
SR-DL36	36"
SR-DL42	42"

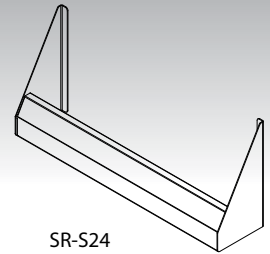
*Add "R" suffix for field installed.

Hang ON Speed Rails*

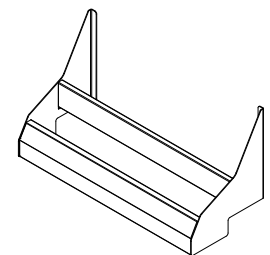
To use with locking speedrail, add suffix N to part number (w/additional price)

Part No.	Length
SR-H12	12"
SR-H13	13"
SR-H14	14"
SR-H15	15"
SR-H16	16"
SR-H17	17"
SR-H18	18"
SR-H19	19"
SR-H20	20"
SR-H21	21"
SR-H22	22"
SR-H23	23"
SR-H24	24"
SR-H28	28"
SR-H30	30"
SR-H34	34"
SR-H36	36"

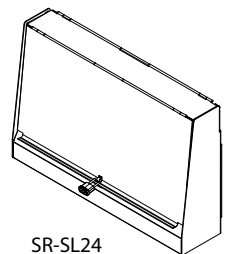
*Add "R" suffix for field installed.



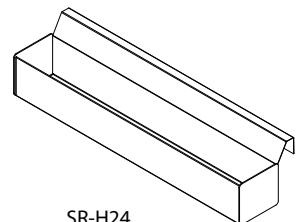
SR-S24



SR-D24



SR-SL24



SR-H24

DRINK RAIL DRAINERS

Drink Rail Drainers

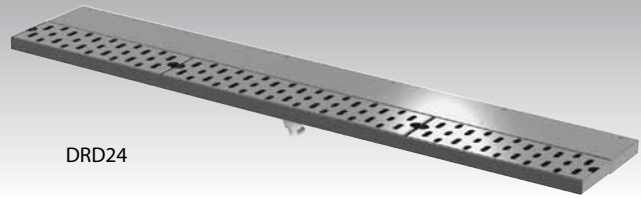
Easily mounts under bar top to create a perfect assembly area for the bartender while protecting your valuable bar surface.

Part No.	Length	Ship Wt. (lbs.)
DRD12	12"	5
DRD18	18"	7
DRD24	24"	9
DRD30	30"	12
DRD36	36"	14
DRD42	42"	16
DRD48	48"	18

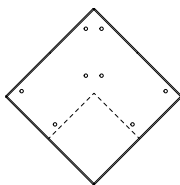
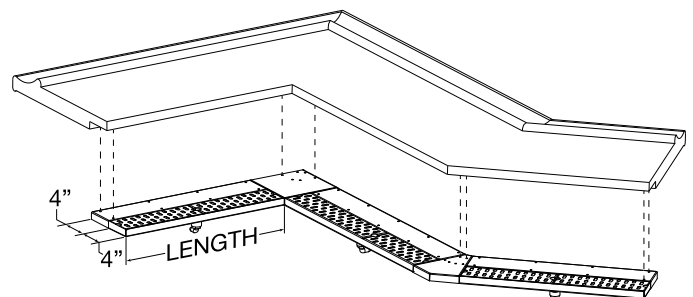
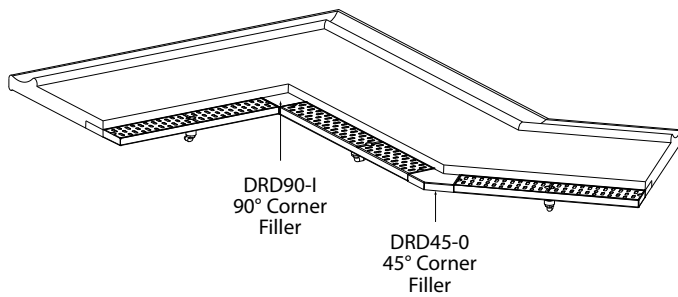
Part No.	Angle	Description
DRD90-I	90°	Corner Filler, 90°, Inside
DRD45-I	45°	Corner Filler, 45°, Inside
DRD90-O	90°	Corner Filler, 90°, Outside
DRD45-O	45°	Corner Filler, 45°, Outside

Misc. Accessories

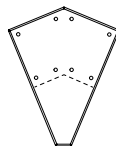
Part No.	Description
1390D	1/2" I.D. vinyl drain tube, Anti-Microbial



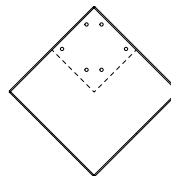
DRD24



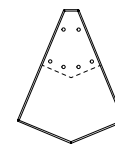
DRD90-I



DRD45-I



DRD90-O



DRD45-O

ACCESSORIES

Stainless Steel Back Apron (In lieu of TS backsplash)

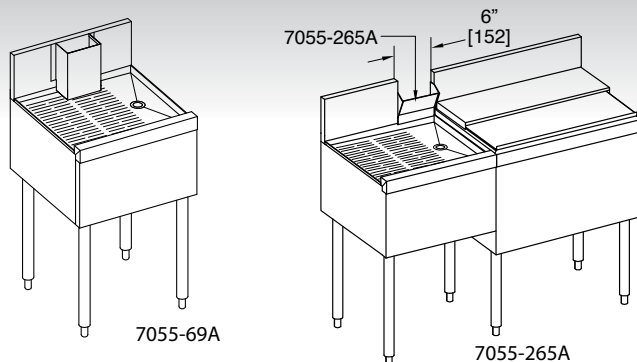
Part No.	Description
7055-282	12" no backsplash
7055-283	18" no backsplash
7055-284	24" no backsplash
7055-285	30" no backsplash
7055-286	36" no backsplash

NOTE: Not applicable on ice chests or items w/ faucets.

Access Cutouts for TS Series

Part No.	Description
7055-69A	Drainboard cutout
7055-265A*	Backsplash cutout for soda lines

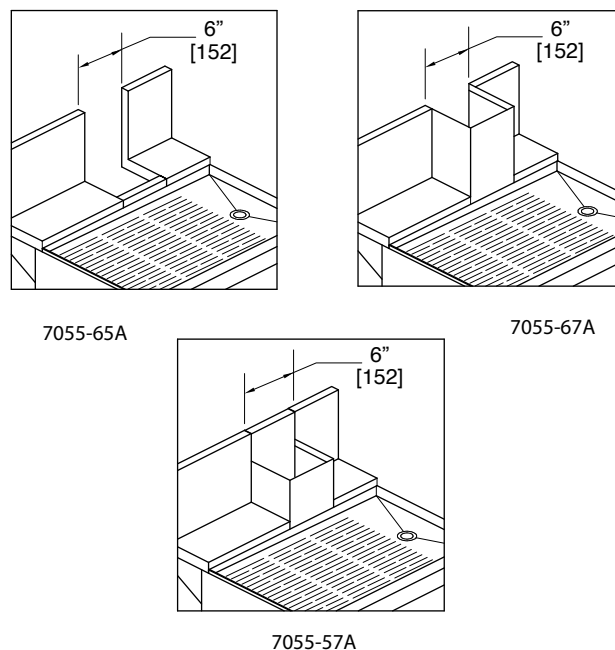
* Not applicable on TSD or modular bar.



Access Cutouts for TSD Series

Part No.	Description
7055-65A*	6" cutout
7055-67A*	6" cutout w/chimney
7055-57A*	6" cutout w/backsplash and 4" chimney

* Please specify location on 6" increments from either end.



Blender Platforms

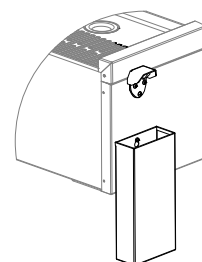
Part No.	Length	Description
7055-121	8"	Platform w/1 Junction Box & Duplex Outlet
7055-118	12"	Platform w/1 Junction Box & Duplex Outlet
7055-119	18"	Platform w/2 Junction Boxes & Duplex Outlets
7055-124	24"	Platform w/2 Junction Boxes & Duplex Outlets
7055-130	30"	Platform w/2 Junction Boxes & Duplex Outlets

Bottle Opener/Cap Receiver & Waste Receptacle

Part No.	Description
7055-50	Bottle Opener & Cap Receiver, Field Installed
7055-50IN	Bottle Opener & Cap Receiver, Factory Installed
7055-43	Bottle Opener & Speed Rail Mounted Waste Chute
7055-40A	Bottle Opener & Speed Rail Mounted Waste Chute & Pan



7055-124 Blender Platform shown on a TS22C Sink



7055-50

ACCESSORIES

Plumbing Accessories

Part No.	Description
43688A	Water Conserving Aerator, 0.5 GPM (1.9 L/min), Field Installed
43688F	Water Conserving Aerator, 1.5 GPM (5.7 L/min), Field Installed
43705	Wrist Blade Handles, Pair, Field Installed (Not Applicable on TS12HSN)
54965-1	Drain Screen for 1-1/2" Drain Socket
54965-2	Crumb Cup for 1-1/2" Drain Socket
43385R	Basin Tubes, Pair, 3/8" for Deck Faucets



43688F



54965-2



54965-1



43705

Towel Ring

Part No.	Description
736B	Towel Ring, Field Installed
736BIN	Towel Ring, Factory Installed

Soap and Towel Dispensers

Part No.	Description
7055-269AR*	Soap Dispenser, Splash Mounted, Field Installed
7055-269A*	Soap Dispenser, Splash Mounted, Factory Installed
7055-270R	Folded Towel Dispenser, Field Installed
7055-270	Folded Towel Dispenser, Factory Installed

* Not Applicable on TSD Series Underbar



7055-270



7055-269A

Leg Kits and Foot Inserts

Part No.	Description
63555	Pair of Leg & Mounting Plates, 17-1/2" to 18-1/2" long
63555-2	Pair of Leg & Mounting Plates, 13-1/2" to 14-1/2" long
63249HR	"High Rise" Foot Insert, 3" height adjustment
63247	"Flanged Foot" Insert, 1" height adjustment
7860-18A	Leg Kit, (4) 6" - 7" w/3" square mounting flange



63249HR



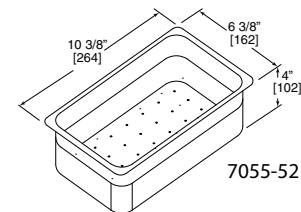
63247

Connector Kit

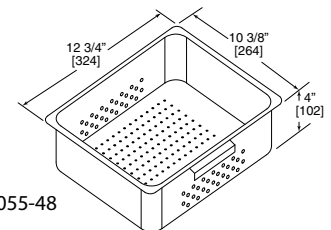
Part No.	Description
7055-45	Underbar Field Connection Kit

Wet Waste Pans

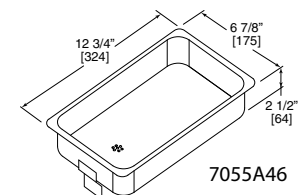
Part No.	Description
7055-52	Perforated Wet Waste Pan for 12" & 14" Blenders, Clear Plastic, 2.7 quart
7055-48	Perforated Wet Waste Pan for 18" Blender, Stainless, 7 quart
7055A46	Wet Waste Pan - Drains into Standpipe



7055-52



7055-48



7055A46

Side Splash Guards

Part No.	Description
7054L	Side Splash Guard, Left, TS and TSD applications
7054R	Side Splash Guard, Right, TS and TSD applications
7054SL	Side Splash Guard, Left, TSS applications
7054SR	Side Splash Guard, Right, TSS applications

7054L

Side Splash Guard

